



CenterPointEnergy.com

CUSTOMER
COUNTY BARN PRECINCT 3

SERVICE ADDRESS
405 Commerce St, Palacios, TX 77465

2254
APR 25 2018

ACCOUNT NUMBER
2904139-9
DATE MAILED
Apr 23, 2018

DATE DUE
MAY 08, 2018
AMOUNT DUE
\$ 43.10

Gas leak or emergency

Leave immediately, then call
888-876-5786, 24 hours a day

Customer service

800-427-7142 toll-free
Monday - Friday, 7 am - 7 pm

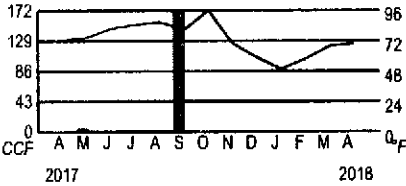
Call before you dig

Call 811
24 hours a day

Comments

PO Box 2628
Houston, TX 77252-2628

Your usage in a glance



Previous usage	Usage this month	Average daily temperature		
		1 year ago	Last month	This month
Total CCF used	2	1	1	1
Average daily gas use (CCF)	0.1	0.0	0.0	0.0
Average daily temperature	72	67	69	69
Days in billing period	30	28	33	33

To better understand your home energy usage and learn energy savings tips, visit CenterPointEnergy.com/myenergyanalyzer

To report gas leaks, carbon monoxide and other gas emergencies, please call 1-888-876-5786. We appreciate your understanding that billing inquiries cannot be answered on this line.

Pay your next bill without lifting a finger. To enroll in AutoPay, just sign and date the back of your bill stub and return to us with a check for your payment amount. It's that easy!

ACCOUNT SUMMARY

Previous gas amount due	\$ 42.12
Payment Apr 11, 2018	- 42.12
Current gas charges (Details on page 2)	+ 43.10
Total amount due	\$ 43.10

Thank you!

APPROVED
COUNTY AUDITOR
[Signature]

Your account is ready to view now. Register for free online account access. View balance, usage history, make an online payment, view recommendations for saving energy and money with My Energy Analyzer, and much more. Register at CenterPointEnergy.com/myaccount.

010 54410614
[Signature]

RECEIVED
APR 25 2018

BY: *[Signature]*

How to pay your bill

Online

Visit: CenterPointEnergy.com/paybill Pay immediately, schedule a payment or set up automatic monthly payments.

Phone

Call 800-427-7142 and make a payment using your checking or savings account, or by debit or credit card.

In person

To find a payment location, visit: CenterPointEnergy.com/paybill or call 800-427-7142.

Mail

Return the payment stub below, with your check or money order, using the return envelope.

Please keep this portion for your records

CUSTOMER
 COUNTY BARN PRECINCT 3

ACCOUNT NUMBER
 2904139-9

DATE DUE

May 08, 2018

SERVICE ADDRESS
 405 Commerce St, Palacios, TX 77465

DATE MAILED
 Apr 23, 2018

AMOUNT DUE

\$ 43.10

DEFINITIONS

CCF 1 CCF = 100 cubic feet of gas. This is how we measure your monthly usage.

Customer charge and base amount. Covers fixed costs for reading meters, issuing bills, maintaining facilities and gas lines, postage, etc. These costs occur even if you do not use gas during a billing period.

Gas Cost Adjustment (GCA) is the cost CenterPoint Energy pays for the gas it delivers to its customers.

Storage inventory charge allows the Company the opportunity to recover the regulated carrying cost of its investment in storage.

Reimbursement of local franchise fee is a fee paid to the city for the company's use of right-of-way in streets and alleys.

Reimbursement of state gross receipts tax is a tax imposed by the State of Texas on each utility company located in an incorporated city having a population of more than 1,000.

For a more detailed description of each of the terms used on your bill, please visit CenterPointEnergy.com/definitions or call Customer Support at 800-427-7142.

Current gas charges

Rate: GSS-2085-GRIP 2017 @14.95 Pressure Base

Meter Number **Day Billing Period**
 3828200587513 33

Billing Period	Current Reading	- Previous Reading	= Total	x	Combined pressure factor	Adjusted Usage
03/16/18 - 04/18/18	9323	9322	1		1.14020	1 CCF
Customer charge						\$ 38.87
Base amount				1 CCF x \$ 0.10670		0.11
Gas cost adjustment				1 CCF x \$ 0.57874		0.58
Reimbursement of local franchise fee						2.11
Reimbursement of State GRT						0.45
Pipeline safety fee						0.98
Total current charges						\$ 43.10

The customer charge includes the current GRIP surcharge of \$4.13.

Your account, managed your way

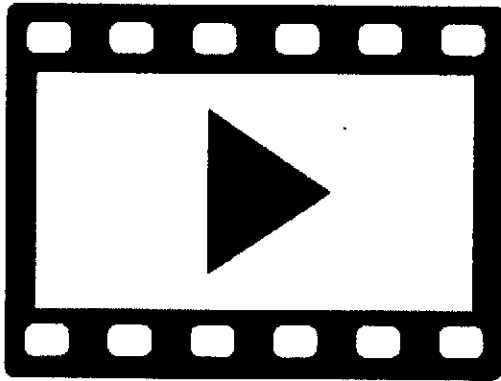
Sign up at CenterPointEnergy.com/myaccount

- **24/7 online account access.** View and/or pay your bill, view usage history, sign up for account services and much more.
- **Go paperless.** Receive an email when your bill is ready to view and pay. Get convenience, get rid of clutter.

- **Pay automatically.** Set up AutoPay by signing and returning the form below with your check payment. It's that easy!
- **Even out the highs and lows of your monthly bills.** Enroll in Average Monthly Billing and spread your natural gas costs throughout the year.
- **Get bill reminders.** Choose text or email, up to five days before your bill is due.

- **Other services.** Report a payment made at a payment location, set up a payment extension and much more. View options from your online account or visit CenterPointEnergy.com/selfservice if you'd prefer not to register.
- **Moving?** Please call us at 800-427-7142 at least two weeks before you move, or complete the forms at CenterPointEnergy.com/selfservice

Mail payments to CenterPoint Energy, PO Box 4981, Houston, TX 77210-4981



Did you know...

Natural gas is a better energy choice than electricity for things like home heating, water heating, cooking and drying clothes?

It costs less to use and is better for the environment.

Watch a 30-second video to learn more.

CenterPointEnergy.com/NaturalGasBenefits

Investing in infrastructure, technology, and services – to make your life better

163734_1A

Know the signs of **CARBON MONOXIDE (CO) exposure**



Headaches



Nausea



Breathlessness



Collapse



Dizziness



Loss of consciousness

CO is a colorless, odorless, tasteless gas that, when inhaled, is dangerous and potentially poisonous. Poorly maintained, improperly vented furnaces, space heaters and stoves are common sources of CO. Treatment is usually breathing fresh air or oxygen, but severe exposure requires medical attention.

CenterPointEnergy.com/COSafety

163944_CNP

BEWARE OF PAYMENT SCAMS TARGETING UTILITIES

Criminals posing as electric, gas or water provider employees are contacting customers and demanding immediate payment to prevent service disconnection. This is a scam.

If you get a visit, phone call or email requesting cash or pre-paid debit card payments to prevent service disconnection, please contact Customer Service and your local police.

For more details: **CenterPointEnergy.com/UtilityScams**

163942

UTILITIES UNITED

AGAINST SCAMS

April, 2018



What's trending? *Your home's energy use*

Use our **FREE** energy cost and emissions calculator to:

- See the cost differences and environmental impacts between natural gas, electricity, propane.
- Compare benefits of high-efficiency natural gas equipment.

CenterPointEnergy.com/MyEnergyAnalyzer

162361_CNP



YOU like us! You really like us!

Thanks to great customers like you, we were named a **2016 Residential Customer Champion** by Market Strategies International in their Cogent Energy Reports™ **2016 Utility Trusted Brand & Customer Engagement™ Residential study.**

You said our service was reliable and our employees were amazing. We appreciate your business and will work to make your customer service experience even better in 2017.

CenterPointEnergy.com/AwardsandRecognition

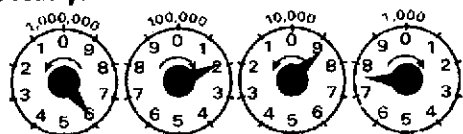
163945_CNP

A safety message from CenterPoint Energy

If you smell natural gas, leave immediately. Call our Gas Leak Hotline at 800-296-9815. Do not use or store flammable products such as gasoline in the same room or area near the water heater or any other gas appliance.

Si percibes un olor a gas natural, sal inmediatamente. Llama a nuestra línea telefónica para fugas de gas a uno de los números de teléfono que aparecen arriba. No use ni almacene productos inflamables tales como gasolina en la misma habitación o en áreas cercanas a un calentador de agua u otro tipo de aparato a gas.

How to read your meter



The following is an example of how to read a typical meter index.

Look at the four dials with their curved arrows. Read from right to left as follows:

1. Read the "thousand-foot" dial as 7, the last number that the pointer passed. Note that the curved arrow on the dial shows a clockwise movement of the pointer.
2. Read the next dial, the "10-thousand" dial. The curved arrow on the dial above shows a

counterclockwise direction. The pointer is near the 9, but to be sure whether to read it as that number or the lower number 8, the previously mentioned "same or lower number rule" must be applied. Since the pointer in the "thousand-foot" dial to the right is nearer the 8 and the pointer has not reached the 0, the "10 thousand" dial should be read as 8.

3. Read the "100-thousand" dial, it seems to point to 2. Double-check by using the rule above. Since the pointer of the "10-thousand" dial is between 8 and 9, take the lower reading number, 1, for the "100-thousand" dial.

4. Read the left-most dial, the "million-foot" dial. The pointer is near the 6. Using the "same or lower number rule", we find the pointer on the dial to the right is between 1 and 2, so we read the "million-foot" dial exactly as the number it is on or near, 6.

The entire meter reading is 6187.

2234
APR 25 2018

Gas leak or emergency

Leave immediately, then call
888-876-5786, 24 hours a day

Customer service

800-427-7142 toll-free
Monday - Friday, 7 am - 7 pm

Call before you dig

Call 811
24 hours a day

Comments

PO Box 2628
Houston, TX 77252-2628

Your usage in a glance



Previous usage	Usage this month		
	1 year ago	Last month	This month
Total CCF used	0	239	0
Average daily gas use (CCF)	0.0	8.5	0.0
Average daily temperature	72	67	69
Days in billing period	30	28	33

To better understand your home energy usage and learn energy savings tips, visit CenterPointEnergy.com/myenergyanalyzer

To report gas leaks, carbon monoxide and other gas emergencies, please call 1-888-876-5786. We appreciate your understanding that billing inquiries cannot be answered on this line.

Pay your next bill without lifting a finger. To enroll in AutoPay, just sign and date the back of your bill stub and return to us with a check for your payment amount. It's that easy!

ACCOUNT SUMMARY

Previous gas amount due	\$ 203.39
Payment Apr 11, 2018	- 203.39
Current gas charges (Details on page 2)	+ 39.85
Total amount due	\$ 39.85

Thank you!

APPROVED COUNTY AUDITOR

Your account is ready to view now. Register for free online account access. View balance, usage history, make an online payment, view recommendations for saving energy and money with My Energy Analyzer, and much more. Register at CenterPointEnergy.com/myaccount.

RECEIVED
APR 25 2018
BY: *[Signature]*

01054410614
AH

How to pay your bill

Online

Visit: CenterPointEnergy.com/paybill Pay immediately, schedule a payment or set up automatic monthly payments.

Phone

Call 800-427-7142 and make a payment using your checking or savings account, or by debit or credit card.

In person

To find a payment location, visit: CenterPointEnergy.com/paybill or call 800-427-7142.

Mail

Return the payment stub below, with your check or money order, using the return envelope.

CUSTOMER
COUNTY BARN PRECINCT 3

ACCOUNT NUMBER
6401111506-6

DATE DUE

Page 2 of 4
May 08, 2018

SERVICE ADDRESS
25000 State Highway 35 S, Palacios, TX 77465-1920

DATE MAILED
Apr 23, 2018

AMOUNT DUE

\$ 39.85

DEFINITIONS

CCF 1 CCF = 100 cubic feet of gas. This is how we measure your monthly usage.

Customer charge and base amount. Covers fixed costs for reading meters, issuing bills, maintaining facilities and gas lines, postage, etc. These costs occur even if you do not use gas during a billing period.

Gas Cost Adjustment (GCA) is the cost CenterPoint Energy pays for the gas it delivers to its customers.

Storage inventory charge allows the Company the opportunity to recover the regulated carrying cost of its investment in storage.

Reimbursement of local franchise fee is a fee paid to the city for the company's use of right-of-way in streets and alleys.

Reimbursement of state gross receipts tax is a tax imposed by the State of Texas on each utility company located in an incorporated city having a population of more than 1,000.

For a more detailed description of each of the terms used on your bill, please visit CenterPointEnergy.com/definitions or call Customer Support at 800-427-7142.

Current gas charges

Rate: GSS-2085-GRIP 2017 @14.95 Pressure Base

Meter Number **Day Billing Period**
3731506736444 33

Billing Period	Current Reading	Previous Reading	Usage
03/16/18 - 04/18/18	282	282	0 CCF
Customer charge *			\$ 38.87
Pipeline safety fee			0.98
Total current charges			\$ 39.85

The customer charge includes the current GRIP surcharge of \$4.13.

Your account, managed your way

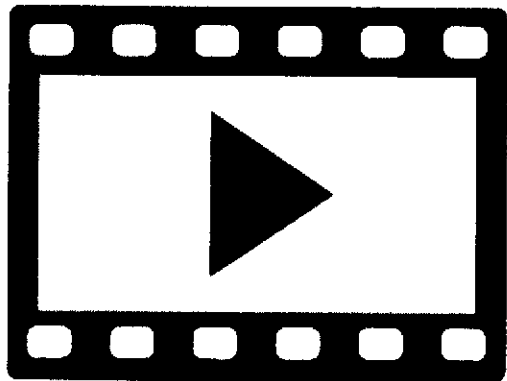
Sign up at CenterPointEnergy.com/myaccount

- **24/7 online account access.** View and/or pay your bill, view usage history, sign up for account services and much more.
- **Go paperless.** Receive an email when your bill is ready to view and pay. Get convenience, get rid of clutter.

- **Pay automatically.** Set up AutoPay by signing and returning the form below with your check payment. It's that easy!
- **Even out the highs and lows of your monthly bills.** Enroll in Average Monthly Billing and spread your natural gas costs throughout the year.
- **Get bill reminders.** Choose text or email, up to five days before your bill is due.

- **Other services.** Report a payment made at a payment location, set up a payment extension and much more. View options from your online account or visit CenterPointEnergy.com/selfservice if you'd prefer not to register.
- **Moving?** Please call us at 800-427-7142 at least two weeks before you move, or complete the forms at CenterPointEnergy.com/selfservice

Mail payments to CenterPoint Energy, PO Box 4981, Houston, TX 77210-4981



Did you know...

Natural gas is a better energy choice than electricity for things like home heating, water heating, cooking and drying clothes?

It costs less to use and is better for the environment.

Watch a 30-second video to learn more.

CenterPointEnergy.com/NaturalGasBenefits

Investing in infrastructure, technology, and services – to make your life better

163734_LA

Know the signs of CARBON MONOXIDE (CO) exposure



Headaches



Nausea



Breathlessness



Collapse



Dizziness



Loss of consciousness

CO is a colorless, odorless, tasteless gas that, when inhaled, is dangerous and potentially poisonous. Poorly maintained, improperly vented furnaces, space heaters and stoves are common sources of CO. Treatment is usually breathing fresh air or oxygen, but severe exposure requires medical attention.

CenterPointEnergy.com/COSafety

163944_CNP

BEWARE OF PAYMENT SCAMS TARGETING UTILITIES

Criminals posing as electric, gas or water provider employees are contacting customers and demanding immediate payment to prevent service disconnection. This is a scam.

If you get a visit, phone call or email requesting cash or pre-paid debit card payments to prevent service disconnection, please contact Customer Service and your local police.

For more details: **CenterPointEnergy.com/UtilityScams**

163042

UTILITIES UNITED

AGAINST SCAMS

April, 2018



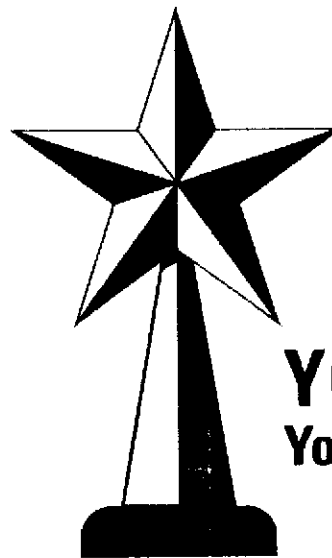
What's trending? *Your home's energy use*

Use our **FREE** energy cost and emissions calculator to:

- See the cost differences and environmental impacts between natural gas, electricity, propane.
- Compare benefits of high-efficiency natural gas equipment.

CenterPointEnergy.com/MyEnergyAnalyzer

162361_CNP



YOU like us! You really like us!

Thanks to great customers like you, we were named a **2016 Residential Customer Champion** by Market Strategies International in their Cogent Energy Reports™ **2016 Utility Trusted Brand & Customer Engagement™ Residential study.**

You said our service was reliable and our employees were amazing. We appreciate your business and will work to make your customer service experience even better in 2017.

CenterPointEnergy.com/AwardsandRecognition

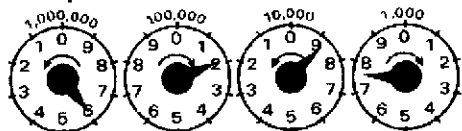
163945_CNP

A safety message from CenterPoint Energy

If you smell natural gas, leave immediately. Call our Gas Leak Hotline at 800-296-9815. Do not use or store flammable products such as gasoline in the same room or area near the water heater or any other gas appliance.

Si percibes un olor a gas natural, sal inmediatamente. Llama a nuestra línea telefónica para fugas de gas a uno de los números de teléfono que aparecen arriba. No use ni almacene productos inflamables tales como gasolina en la misma habitación o en áreas cercanas a un calentador de agua u otro tipo de aparato a gas.

How to read your meter



The following is an example of how to read a typical meter index.

Look at the four dials with their curved arrows. Read from right to left as follows:

1. Read the "thousand-foot" dial as 7, the last number that the pointer passed. Note that the curved arrow on the dial shows a clockwise movement of the pointer.
2. Read the next dial, the "10-thousand" dial. The curved arrow on the dial above shows a

counterclockwise direction. The pointer is near the 9, but to be sure whether to read it as that number or the lower number 8, the previously mentioned "same or lower number rule" must be applied. Since the pointer in the "thousand-foot" dial to the right is nearer the 8 and the pointer has not reached the 0, the "10-thousand" dial should be read as 8.

3. Read the "100-thousand" dial, it seems to point to 2. Double-check by using the rule above. Since the pointer of the "10-thousand" dial is between 8 and 9, take the lower reading number, 1, for the "100-thousand" dial.

4. Read the left-most dial, the "million-foot" dial. The pointer is near the 6. Using the "same or lower number rule", we find the pointer on the dial to the right is between 1 and 2, so we read the "million-foot" dial exactly as the number it is on or near, 6.

The entire meter reading is 6187.



A Calpine Company

Acct #: 1503190135 / 4-17 Bill #: B1804194252 Bill Date: 04/20/18

4199

Page: 1 of 2

APR 24 2018

Matagorda County
1700 7th Street, Room 301
Bay City, TX 77414

010-54410-660

Service at ESI ID #: 10032789420235651
2000 FM 521 ODLT 400HPS UNIT RR PARK
WADSWORTH, TX 77483

bzapalac@co.matagorda.tx.us

ODLTS FM 521 Prk Wadsworth/River Prk

1500 Rankin Rd, Suite 200 | Houston, TX 77073 | PUCT No. 10098

Bill Date: 04/20/18 Bill Period - 03/16/18 thru 04/17/18

Previous Balance	Current Charges	Payments/Adj.	Amount Due	Due Date
\$44.97	\$44.97	-\$44.97	\$44.97	05/21/18

Questions or Comments

877.653.5090 (24 hours a day / 24 horas al dia)

support@championenergyservices.com

www.championenergyservices.com

For Outages / Emergencies Call:
AEP Texas Central (24 hours a day)
866.223.8508

Please send payments to:
P.O. Box 4190
Houston, TX 77210-4190

Thank you for your business!

Champion Energy policy is to report unpaid balances to appropriate credit agencies.

Meter	Type	Dates	Current Meter Read	Previous Meter Read	Multiplier	kWh Usage	kW Demand	Power Factor
UNMETERED		03/16 - 04/17				310.00		

Qty Rate Amount

Current Charges

Description	Qty	Rate	Amount
Champion Energy Charges			
CKWH : Commercial Energy	310.00	0.05558	\$17.23
TDU Delivery Charges			\$16.96
DIS001: Distribution Charge	310.00	0.01548	\$4.80
ODL005: Outdoor Lighting Facilities	2.00	5.07000	\$10.14
TRN001: Transmission Charge	310.00	0.00252	\$0.78
TRN002: Firm Point to Point Transmission Service Charge for long term or short term firm	310.00	0.00400	\$1.24
TDU Delivery Charges Non Taxable			\$7.96
MSC025: Nuclear Decommissioning	310.00	0.00003	\$0.01
MSC036: Recovery of securitized regulatory assets - stranded costs (TC2)	310.00	0.01745	\$5.41
MSC037: Recovery of securitized regulatory assets - stranded costs (TC3)	310.00	0.00819	\$2.54
TDU Surcharges			\$2.76
MSC042: Distribution Cost Recovery Factor	310.00	0.00890	\$2.76

Taxes

PUC Assessment \$0.06

Total Current Charges \$44.97

Previous Charges

Previous Balance \$44.97

Payment on 04/05/2018 -\$44.97

Balance Forward \$0.00

Total Amount Due \$44.97

Contract Details	Usage kWh	Avg Rate	Amount
03/17/18 - 04/17/18 Fixed Rate (Contract Rate : 0.05558)	310.00	0.05558	\$17.23

The average price you paid for electricity this month is 14.487¢ per kWh. You have a contract valid until 07/18/2020.

Please return this portion with your payment

Shelly Stats

RECEIVED APR 23 2018

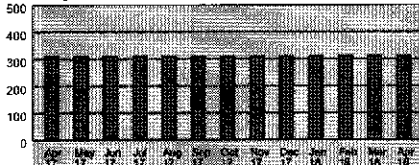
BY: OB

APPROVED COUNTY AUDITOR OB KU

If you believe this bill includes unauthorized charges, please contact us immediately. If you are not satisfied with our review, you may file a complaint with the Public Utility Commission of Texas, P.O. Box 13326, Austin, Texas 78711-3326, (512)936-7120 or toll-free in Texas at (888)782-8477. Hearing and speech-impaired individuals with text telephones (TTY) may contact the commission at (512)936-7136.

🗨 Questions or Comments
📞 877.653.5090 (24 hours
a day / 24 horas al dia)

Usage History





A Calpine Company

1500 Rankin Rd, Suite 200 | Houston, TX 77073 | PUCT No. 10098

Acct #: 1503190136 / 4-17 Bill #: B1804194253 Bill Date: 04/20/18

4199

Page: 1 of 2

Matagorda County
1700 7th Street, Room 301
Bay City, TX 77414

APR 24 2018
010-54410-660

Service at ESI ID #: #10032789420235652
2001 FM 521 ODLT 400HPS UNIT RR PARK
WADSWORTH, TX 77483
bzopalac@co.matagorda.tx.us

ODLTS FM 521 Prk Wadsworth/River Prk

Bill Date: 04/20/18 Bill Period - 03/16/18 thru 04/17/18

Previous Balance	Current Charges	Payments/Adj.	Amount Due	Due Date
\$22.47	\$22.47	-\$22.47	\$22.47	05/21/18

Meter	Type	Dates	Current Meter Read	Previous Meter Read	Multiplier	kWh Usage	kW Demand	Power Factor
UNMETERED		03/16 - 04/17				155.00		

Questions or Comments
877.653.5090 (24 hours a day / 24 horas al dia)

support@championenergyservices.com
www.championenergyservices.com

For Outages / Emergencies Call:
AEP Texas Central (24 hours a day)
866.223.8508

Please send payments to:
P.O. Box 4190
Houston, TX 77210-4190

Thank you for your business!

Champion Energy policy is to report unpaid balances to appropriate credit agencies.

Qty Rate Amount

Current Charges

Champion Energy Charges			
CKWH : Commercial Energy	155.00	0.05555	\$8.61
TDU Delivery Charges			\$8.48
DIS001: Distribution Charge	155.00	0.01548	\$2.40
ODL005: Outdoor Lighting Facilities	1.00	5.07000	\$5.07
TRN001: Transmission Charge	155.00	0.00252	\$0.39
TRN002: Firm Point to Point Transmission Service Charge for long term or short term firm	155.00	0.00400	\$0.62
TDU Delivery Charges Non Taxable			\$3.97
MSC036: Recovery of securitized regulatory assets - stranded costs (TC2)	155.00	0.01742	\$2.70
MSC037: Recovery of securitized regulatory assets - stranded costs (TC3)	155.00	0.00819	\$1.27
TDU Surcharges			\$1.38
MSC042: Distribution Cost Recovery Factor	155.00	0.00890	\$1.38

Taxes

PUC Assessment..... \$0.03

Total Current Charges..... \$22.47

APPROVED COUNTY AUDITOR
DB

Previous Charges

Previous Balance..... \$22.47

Payment on 04/05/2018..... -\$22.47

Balance Forward..... \$0.00

Total Amount Due..... \$22.47

Contract Details

Usage kWh	Avg Rate	Amount
17/18 - 04/17/18 Fixed Rate (Contract Rate : 0.05558)	155.00	0.05558
		\$8.61

RECEIVED
APR 23 2018

The average price you paid for electricity this month is 14.477¢ per kWh.
You have a contract valid until 07/18/2020.

BY: DB

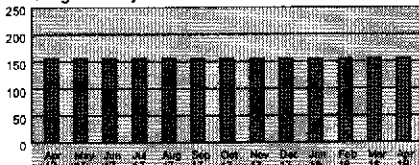
Please return this portion with your payment

Shelly starts

If you believe this bill includes unauthorized charges, please contact us immediately. If you are not satisfied with our review, you may file a complaint with the Public Utility Commission of Texas, P.O. Box 13326, Austin, Texas 78711-3326, (512)936-7120 or toll-free in Texas at (888)782-8477. Hearing and speech-impaired individuals with text telephones (TTY) may contact the commission at (512)936-7136.

📞 Questions or Comments
☎ 877.653.5090 (24 hours
a day / 24 horas al dia)

Usage History



Matagorda County
1700 7th Street, Room 301
Bay City, TX 77414

APR 23 2018
010-5440-614

Service at ESI ID #: 110032789453394875
25000 N Highway 35 Unit Office
Palacios, TX 77465-1920
bzapalac@co.matagorda.tx.us

25000 SH 35/Pct#3

1500 Rankin Rd, Suite 200 | Houston, TX 77073 | PUCT No. 10098

Bill Date: 04/16/18 Bill Period - 03/13/18 thru 04/12/18

Previous Balance	Current Charges	Payments/Adj.	Amount Due	Due Date
\$86.48	\$105.59	-\$86.48	\$105.59	05/16/18

Meter	Type	Dates	Current Meter Read	Previous Meter Read	Multiplier	kWh Usage	kW Demand	Power Factor
120730531	ACT	03/13 - 04/12	70750	69909	1	841.00		0

Questions or Comments
877.653.5090 (24 hours a day / 24 horas al dia)

support@championenergyservices.com
www.championenergyservices.com

For Outages / Emergencies Call:
AEP Texas Central (24 hours a day)
866.223.8508

Please send payments to:
P.O. Box 4190
Houston, TX 77210-4190

Thank you for your business!

Champion Energy policy is to report unpaid balances to appropriate credit agencies.

Current Charges

	Qty	Rate	Amount
Champion Energy Charges			
CKWH : Commercial Energy.....	841.00	0.05558	\$46.74
TDU Delivery Charges.....			\$25.40
BAS001:Basic Customer Charge.....	1.00	3.20000	\$3.20
BAS003:Delivery Point Charge.....	1.00	3.68000	\$3.68
DIS001:Distribution Charge.....	841.00	0.01549	\$13.03
TRN001:Transmission Charge.....	841.00	0.00251	\$2.11
TRN002:Firm Point to Point Transmission Service Charge for long term or short term firm.....	841.00	0.00402	\$3.38
TDU Delivery Charges Non Taxable.....			\$21.55
MSC025:Nuclear Decommissioning.....	841.00	0.00001	\$0.01
MSC036:Recovery of securitized regulatory assets - stranded costs (TC2).....	841.00	0.01743	\$14.66
MSC037:Recovery of securitized regulatory assets - stranded costs (TC3).....	841.00	0.00818	\$6.88
TDU Surcharges.....			\$11.76
MSC039:Advanced Metering Cost Recovery Factor.....	1.00	4.17000	\$4.17
MSC041:Energy Efficiency Cost Recovery Factor (EECRF).....	841.00	0.00013	\$0.11
MSC042:Distribution Cost Recovery Factor.....	841.00	0.00889	\$7.48
Taxes			
PUC Assessment.....			\$0.14
Total Current Charges.....			\$105.59

Previous Charges

Previous Balance.....			\$86.48
Payment on 03/29/2018.....			-\$86.48
Balance Forward.....			\$0.00

Total Amount Due..... \$105.59

Contract Details	Usage kWh	Avg Rate	Amount
03/14/18 - 04/12/18 Fixed Rate (Contract Rate : 0.05558)	841.00	0.05558	\$46.74

APPROVED COUNTY AUDITOR
DB KU

Shelly Strick

RECEIVED
APR 18 2018

BY: *DB*
after 3:00

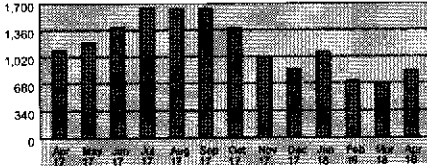
Please return this portion with your payment

The average price you paid for electricity this month is 12.539¢ per kWh.
You have a contract valid until 07/13/2020.

If you believe this bill includes unauthorized charges, please contact us immediately.
If you are not satisfied with our review, you may file a complaint with the Public Utility Commission of Texas, P.O. Box 13326, Austin, Texas 78711-3326, (512)936-7120 or toll-free in Texas at (888)782-8477. Hearing and speech-impaired individuals with text telephones (TTY) may contact the commission at (512)936-7136.

Questions or Comments
877.653.5090 (24 hours a day / 24 horas al dia)

Usage History





A Calpine Company

Acct #: 1503190162 / 4-12 Bill #: B1804139313 Bill Date: 04/16/18

4199

Page: 1 of 2

Matagorda County
1700 7th Street, Room 301
Bay City, TX 77414

APR 23 2018
010-5440-614

Service at ESI ID #: 10032789474945241
25000 N HIGHWAY 35 UNIT P7
PALACIOS, TX 77465
bzapalac@co.matagorda.tx.us

25000 St 35 Unit 7 / Pct #3

1500 Rankin Rd, Suite 200 | Houston, TX 77073 | PUCT No. 10098

Bill Date: 04/16/18 Bill Period - 03/13/18 thru 04/12/18

Previous Balance	Current Charges	Payments/Adj.	Amount Due	Due Date
\$38.72	\$42.33	-\$38.72	\$42.33	05/16/18

Meter	Type	Dates	Current Meter Read	Previous Meter Read	Multiplier	kWh Usage	kW Demand	Power Factor
122240914	ACT	03/13 - 04/12	37216	36941	1	275.00		0

Questions or Comments
877.653.5090 (24 hours a day / 24 horas al dia)

support@championenergyservices.com
www.championenergyservices.com

For Outages / Emergencies Call:
AEP Texas Central (24 hours a day)
866.223.8508

Please send payments to:
P.O. Box 4190
Houston, TX 77210-4190

Thank you for your business!

Champion Energy policy is to report unpaid balances to appropriate credit agencies.

Current Charges

	Qty	Rate	Amount
Champion Energy Charges			
CKWH : Commercial Energy.....	275.00	0.05556	\$15.28
TDU Delivery Charges.....			\$12.93
BAS001:Basic Customer Charge.....	1.00	3.20000	\$3.20
BAS003:Delivery Point Charge.....	1.00	3.68000	\$3.68
DIS001:Distribution Charge.....	275.00	0.01549	\$4.26
TRN001:Transmission Charge.....	275.00	0.00251	\$0.69
TRN002:Firm Point to Point Transmission Service Charge for long term or short term firm.....	275.00	0.00400	\$1.10
TDU Delivery Charges Non Taxable.....			\$7.05
MSC036:Recovery of securitized regulatory assets - stranded costs (TC2).....	275.00	0.01745	\$4.80
MSC037:Recovery of securitized regulatory assets - stranded costs (TC3).....	275.00	0.00818	\$2.25
TDU Surcharges.....			\$6.64
MSC039:Advanced Metering Cost Recovery Factor.....	1.00	4.17000	\$4.17
MSC041:Energy Efficiency Cost Recovery Factor (EECRF).....	275.00	0.00011	\$0.03
MSC042:Distribution Cost Recovery Factor.....	275.00	0.00887	\$2.44
Taxes			
Gross Receipts Reimb.....			\$0.37
PUC Assessment.....			\$0.06
Total Current Charges.....			\$42.33

APPROVED COUNTY AUDITOR
DB KM

Previous Charges

Previous Balance.....	\$38.72
Payment on 03/29/2018.....	-\$38.72
Balance Forward.....	\$0.00
Total Amount Due.....	\$42.33

Shelly Stott

RECEIVED
APR 18 2018

BY: DB after 3:00

Contract Details	Usage kWh	Avg Rate	Amount
03/14/18 - 04/12/18 Fixed Rate (Contract Rate : 0.05558)	275.00	0.05558	\$15.28

Please return this portion with your payment

The average price you paid for electricity this month is 15.236¢ per kWh.
You have a contract valid until 07/13/2020.

If you believe this bill includes unauthorized charges, please contact us immediately.
If you are not satisfied with our review, you may file a complaint with the Public Utility Commission of Texas, P.O. Box 13326, Austin, Texas 78711-3326, (512)936-7120 or toll-free in Texas at (888)782-8477. Hearing and speech-impaired individuals with text telephones (TTY) may contact the commission at (512)936-7136.

Questions or Comments
877.653.5090 (24 hours a day / 24 horas al dia)

Usage History





A Calpine Company

Acct #: 1503190163 / 4-12 Bill #: B1804139314 Bill Date: 04/16/18

4199

Page: 1 of 2

Matagorda County
1700 7th Street, Room 301
Bay City, TX 77414

APR 23 2018
010-54410-614

Service at ESI ID #: 10032789474945242
25000 N HIGHWAY 35 ODLT 400HPS
PALACIOS, TX 77465
bzapalac@co.matagorda.tx.us

ODLTS 25000 SH 35/Pct#3

1500 Rankin Rd, Suite 200 | Houston, TX 77073 | PUCT No. 10098

Bill Date: 04/16/18 Bill Period - 03/13/18 thru 04/12/18

Previous Balance	Current Charges	Payments/Adj.	Amount Due	Due Date
\$90.70	\$90.70	-\$90.70	\$90.70	05/16/18

Meter	Type	Dates	Current Meter Read	Previous Meter Read	Multiplier	kWh Usage	kW Demand	Power Factor
UNMETERED		03/13 - 04/12				620.00		

Questions or Comments
877.653.5090 (24 hours a day / 24 horas al dia)

support@championenergyservices.com
www.championenergyservices.com

For Outages / Emergencies Call:
AEP Texas Central (24 hours a day)
866.223.8508

Please send payments to:
P.O. Box 4190
Houston, TX 77210-4190

Thank you for your business!

Champion Energy policy is to report unpaid balances to appropriate credit agencies.

Current Charges

	Qty	Rate	Amount
Champion Energy Charges			
CKWH : Commercial Energy.....	620.00	0.05558	\$34.46
TDU Delivery Charges.....			\$33.93
DIS001: Distribution Charge.....	620.00	0.01548	\$9.60
ODL005: Outdoor Lighting Facilities.....	4.00	5.07000	\$20.28
TRN001: Transmission Charge.....	620.00	0.00252	\$1.56
TRN002: Firm Point to Point Transmission Service Charge for long term or short term firm.....	620.00	0.00402	\$2.49
TDU Delivery Charges Non Taxable.....			\$15.89
MSC025: Nuclear Decommissioning.....	620.00	0.00002	\$0.01
MSC036: Recovery of securitized regulatory assets - stranded costs (TC2).....	620.00	0.01743	\$10.81
MSC037: Recovery of securitized regulatory assets - stranded costs (TC3).....	620.00	0.00818	\$5.07
TDU Surcharges.....			\$5.51
MSC042: Distribution Cost Recovery Factor.....	620.00	0.00889	\$5.51
Taxes			
Gross Receipts Reimb.....			\$0.79
PUC Assessment.....			\$0.12
Total Current Charges.....			\$90.70

APPROVED COUNTY AUDITOR
DB KU

Previous Charges

Previous Balance.....	\$90.70
Payment on 03/29/2018.....	-\$90.70
Balance Forward.....	\$0.00

Total Amount Due..... \$90.70

Contract Details	Usage kWh	Avg Rate	Amount
03/14/18 - 04/12/18 Fixed Rate (Contract Rate : 0.05558)	620.00	0.05558	\$34.46

The average price you paid for electricity this month is 14.482¢ per kWh.

Please return this portion with your payment

Shelly Stutz

RECEIVED
APR 18 2018

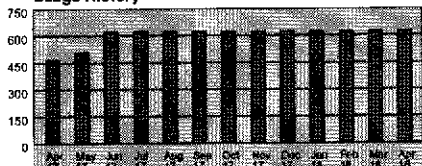
BY: DB
after 3:00

You have a contract valid until 07/14/2020.

If you believe this bill includes unauthorized charges, please contact us immediately. If you are not satisfied with our review, you may file a complaint with the Public Utility Commission of Texas, P.O. Box 13326, Austin, Texas 78711-3326, (512)936-7120 or toll-free in Texas at (888)782-8477. Hearing and speech-impaired individuals with text telephones (TTY) may contact the commission at (512)936-7136.

Questions or Comments
877.653.5090 (24 hours
a day / 24 horas al dia)

Usage History





A Calpine Company

Acct #: 1503190169 / 412 Bill #: B1804139315 Bill Date: 04/16/18

4199

Page: 1 of 2

Matagorda County
1700 7th Street, Room 301
Bay City, TX 77414

APR 23 2018

010-54410-595

Service at ESI ID #: 10032789482241440
FM 459 UNIT P43
EL MATON, TX 77440

El Maton Unit P43 / Transfer St.

bzapalac@co.matagorda.tx.us

1500 Rankin Rd, Suite 200 | Houston, TX 77073 | PUCT No. 10098

Bill Date: 04/16/18 Bill Period - 03/13/18 thru 04/12/18

Previous Balance	Current Charges	Payments/Adj.	Amount Due	Due Date
\$21.30	\$23.31	-\$21.30	\$23.31	05/16/18

Questions or Comments

877.653.5090 (24 hours a day / 24 horas al dia)

support@championenergyservices.com
www.championenergyservices.com

For Outages / Emergencies Call:
AEP Texas Central (24 hours a day)
866.223.8508

Please send payments to:
P.O. Box 4190
Houston, TX 77210-4190

Thank you for your business!

Champion Energy policy is to report unpaid balances to appropriate credit agencies.

Meter	Type	Dates	Current Meter Read	Previous Meter Read	Multiplier	kWh Usage	kW Demand	Power Factor
122301621	ACT	03/13 - 04/12	7607	7498	1	109.00		

Current Charges

	Qty	Rate	Amount
Champion Energy Charges			
CKWH : Commercial Energy.....	109.00	0.05560	\$6.06 ✓
TDU Delivery Charges.....			\$9.28
BAS001:Basic Customer Charge.....	1.00	3.20000	\$3.20
BAS003:Delivery Point Charge.....	1.00	3.68000	\$3.68
DIS001:Distribution Charge.....	109.00	0.01550	\$1.69
TRN001:Transmission Charge.....	109.00	0.00248	\$0.27
TRN002:Firm Point to Point Transmission Service Charge for long term or short term firm.....	109.00	0.00404	\$0.44
TDU Delivery Charges Non Taxable.....			\$2.79
MSC036:Recovery of securitized regulatory assets - stranded costs (TC2).....	109.00	0.01743	\$1.90
MSC037:Recovery of securitized regulatory assets - stranded costs (TC3).....	109.00	0.00817	\$0.89
TDU Surcharges.....			\$5.15
MSC039:Advanced Metering Cost Recovery Factor.....	1.00	4.17000	\$4.17
MSC041:Energy Efficiency Cost Recovery Factor (EECRF).....	109.00	0.00009	\$0.01
MSC042:Distribution Cost Recovery Factor.....	109.00	0.00890	\$0.97
Taxes			
PUC Assessment.....			\$0.03
Total Current Charges.....			\$23.31

Previous Charges

Previous Balance.....	\$21.30
Payment on 03/29/2018.....	-\$21.30
Balance Forward.....	\$0.00

Total Amount Due..... \$23.31

Contract Details	Usage kWh	Avg Rate	Amount
03/14/18 - 04/12/18 Fixed Rate (Contract Rate : 0.05558)	109.00	0.05558	\$6.06 ✓

RECEIVED

APR 18 2018

BY: *IOB*
after 3:00

APPROVED COUNTY AUDITOR

DB Kull

Please return this portion with your payment

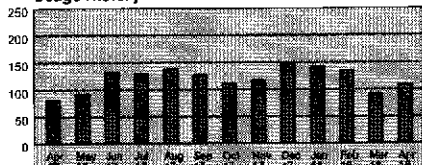
Shelly Starks

The average price you paid for electricity this month is 21.358¢ per kWh.
You have a contract valid until 07/13/2020.

If you believe this bill includes unauthorized charges, please contact us immediately.
If you are not satisfied with our review, you may file a complaint with the Public Utility Commission of Texas, P.O. Box 13326, Austin, Texas 78711-3326, (512)936-7120 or toll-free in Texas at (888)782-8477. Hearing and speech-impaired individuals with text telephones (TTY) may contact the commission at (512)936-7136.

Questions or Comments
877.653.5090 (24 hours a day / 24 horas al dia)

Usage History



Matagorda County
1700 7th Street, Room 301
Bay City, TX 77414

APR 24 2018
010-54410-595

Service at ESI ID #: #10032789494278861
LD GULF RD UNIT STATION COLLECT STA
MATAGORDA, TX 77457
bzapalac@co.matagorda.tx.us

Matagorda/Transfer Station

1500 Rankin Rd, Suite 200 | Houston, TX 77073 | PUCT No. 10098

Bill Date: 04/19/18 Bill Period - 03/16/18 thru 04/17/18

Previous Balance	Current Charges	Payments/Adj.	Amount Due	Due Date
\$15.33	\$15.90	-\$15.33	\$15.90	05/21/18

Meter	Type	Dates	Current Meter Read	Previous Meter Read	Multiplier	kWh Usage	kW Demand	Power Factor
119431822	ACT	03/16 - 04/17	789	746	1	43.00		0

Questions or Comments
877.653.5090 (24 hours a day / 24 horas al dia)

support@championenergyservices.com
www.championenergyservices.com

Qty Rate Amount

Current Charges

Description	Qty	Rate	Amount
Champion Energy Charges			
CKWH : Commercial Energy.....	43.00	0.05558	\$2.39 ✓
TDU Delivery Charges.....			\$7.83
BAS001:Basic Customer Charge.....	1.00	3.20000	\$3.20
BAS003:Delivery Point Charge.....	1.00	3.68000	\$3.68
DIS001:Distribution Charge.....	43.00	0.01558	\$0.67
TRN001:Transmission Charge.....	43.00	0.00256	\$0.11
TRN002:Firm Point to Point Transmission Service Charge for long term or short term firm.....	43.00	0.00395	\$0.17
TDU Delivery Charges Non Taxable.....			\$1.10
MSC036:Recovery of securitized regulatory assets - stranded costs (TC2).....	43.00	0.01744	\$0.75
MSC037:Recovery of securitized regulatory assets - stranded costs (TC3).....	43.00	0.00814	\$0.35
TDU Surcharges.....			\$4.56
MSC039:Advanced Metering Cost Recovery Factor.....	1.00	4.17000	\$4.17
MSC041:Energy Efficiency Cost Recovery Factor (EECRF).....	43.00	0.00023	\$0.01
MSC042:Distribution Cost Recovery Factor.....	43.00	0.00884	\$0.38
Taxes			
PUC Assessment.....			\$0.02
Total Current Charges.....			\$15.90

Previous Charges

Previous Balance.....	\$15.33
Payment on 04/05/2018.....	-\$15.33
Balance Forward.....	\$0.00

Total Amount Due..... \$15.90

Contract Details	Usage kWh	Avg Rate	Amount
03/17/18 - 04/17/18 Fixed Rate (Contract Rate : 0.05558)	43.00	0.05558	\$2.39 ✓

APPROVED COUNTY AUDITOR
OB

Shelly Fortz

RECEIVED
APR 23 2018

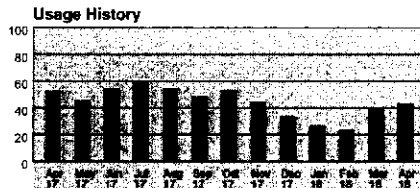
BY: OB

Please return this portion with your payment

The average price you paid for electricity this month is 36.930¢ per kWh.
You have a contract valid until 07/18/2020.

Questions or Comments
877.653.5090 (24 hours
a day / 24 horas al dia)

If you believe this bill includes unauthorized charges, please contact us immediately.
If you are not satisfied with our review, you may file a complaint with the Public Utility
Commission of Texas, P.O. Box 13326, Austin, Texas 78711-3326, (512)936-7120 or
toll-free in Texas at (888)782-8477. Hearing and speech-impaired individuals
with text telephones (TTY) may contact the commission at (512)936-7136.





A Calpine Company

Acct #: 1709200259 / 4-18 Bill #: B1804195455 Bill Date: 04/20/18 4199 Page: 1 of 2

Matagorda County
1700 7th Street, Room 301
Bay City, TX 77414

APR 24 2018

010-54410-613

Service at ESI ID #: 10032789427413670
1203 COUNTY ROAD 243 UNIT FIRESTA
MATAGORDA, TX 77457

bzapalac@co.matagorda.tx.us

Selkirk Fire Dept/Pct#2

1500 Rankin Rd, Suite 200 | Houston, TX 77073 | PUCT No. 10098

Bill Date: 04/20/18 Bill Period - 03/19/18 thru 04/18/18

Previous Balance	Current Charges	Payments/Adj.	Amount Due	Due Date
\$80.94	\$83.54	-\$80.94	\$83.54	05/21/18

Meter	Type	Dates	Current Meter Read	Previous Meter Read	Multiplier	kWh Usage	kW Demand	Power Factor
122279171	ACT	03/19 - 04/18	19121	18966	1	155.00	3.60	0

Questions or Comments
877.653.5090 (24 hours a day / 24 horas al dia)

support@championenergyservices.com
www.championenergyservices.com

For Outages / Emergencies Call:
AEP Texas Central (24 hours a day)
866.223.8508

Please send payments to:
P.O. Box 4190
Houston, TX 77210-4190

Thank you for your business!

Champion Energy policy is to report unpaid balances to appropriate credit agencies.

Qty Rate Amount

Current Charges

Description	Qty	Rate	Amount
Champion Energy Charges			
CKWH : Commercial Energy.....	155.00	0.05555	\$8.61
TDU Delivery Charges.....			\$62.08
BAS001:Basic Customer Charge.....	1.00	3.26000	\$3.26
BAS003:Delivery Point Charge.....	1.00	15.81000	\$15.81
DIS001:Distribution Charge.....	9.30	3.31398	\$30.82
TRN001:Transmission Charge.....	3.60	1.28611	\$4.63
TRN002:Firm Point to Point Transmission Service Charge for long term or short term firm.....	3.60	2.10000	\$7.56
TDU Delivery Charges Non Taxable.....			\$4.01
MSC025:Nuclear Decommissioning.....	9.30	0.00430	\$0.04
MSC036:Recovery of securitized regulatory assets - stranded costs (TC2).....	155.00	0.01742	\$2.70
MSC037:Recovery of securitized regulatory assets - stranded costs (TC3).....	155.00	0.00819	\$1.27
TDU Surcharges.....			\$8.71
MSC039:Advanced Metering Cost Recovery Factor.....	1.00	2.05000	\$2.05
MSC041:Energy Efficiency Cost Recovery Factor (EECRF).....	155.00	0.00039	\$0.06
MSC042:Distribution Cost Recovery Factor.....	9.30	0.70968	\$6.60
Taxes			
PUC Assessment.....			\$0.13
Total Current Charges.....			\$83.54

Previous Charges

Previous Balance.....			\$80.94
Payment on 04/05/2018.....			-\$80.94
Balance Forward.....			\$0.00

Total Amount Due..... \$83.54

APPROVED COUNTY AUDITOR

DB [Signature]

Shelly [Signature]

RECEIVED
APR 23 2018

BY: DB

Contract Details	Usage kWh	Avg Rate	Amount
03/20/18 - 04/18/18 Fixed Rate (Contract Rate : 0.05558)	155.00	0.05558	\$8.61

Please return this portion with your payment

The average price you paid for electricity this month is 53.813¢ per kWh.
You have a contract valid until 07/21/2020.

Questions or Comments
877.653.5090 (24 hours a day / 24 horas al dia)

If you believe this bill includes unauthorized charges, please contact us immediately.
If you are not satisfied with our review, you may file a complaint with the Public Utility Commission of Texas, P.O. Box 13326, Austin, Texas 78711-3326, (512)936-7120 or toll-free in Texas at (888)782-8477. Hearing and speech-impaired individuals with text telephones (TTY) may contact the commission at (512)936-7136.

