

**CUSTOMER**  
MATAGORDA COUNTY PRCT #4  
DBA BLESSING CMNTY CTR  
**SERVICE ADDRESS**  
734 Fm 616, Blessing, TX 77419

2254

**ACCOUNT NUMBER**  
2876939-6  
**DATE MAILED**  
Dec 21, 2017

**DATE DUE**  
**AMOUNT DUE**

Page 1 of 4  
**Jan 05, 2018**  
**\$ 91.18**

**DEC 28 2017**

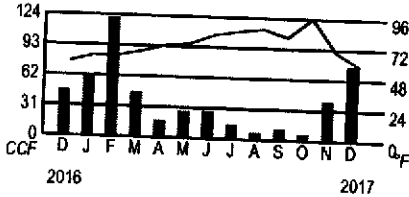
**Gas leak or emergency**  
Leave immediately, then call  
888-876-5786, 24 hours a day

**Customer service**  
800-427-7142 toll-free  
Monday - Friday, 7 am - 7 pm

**Call before you dig**  
Call 811  
24 hours a day

**Comments**  
PO Box 2628  
Houston, TX 77252-2628

**Your usage in a glance**



Previous usage	Average daily temperature		
	1 year ago	Last month	This month
Total CCF used	47	41	76
Average daily gas use (CCF)	1.4	1.4	2.6
Average daily temperature	58	69	58
Days in billing period	33	29	29

To better understand your home energy usage and learn energy savings tips, visit [CenterPointEnergy.com/myenergyanalyzer](http://CenterPointEnergy.com/myenergyanalyzer)

To report gas leaks, carbon monoxide and other gas emergencies, please call 1-888-876-5786. We appreciate your understanding that billing inquiries cannot be answered on this line.  
Pay your next bill without lifting a finger. To enroll in AutoPay, just sign and date the back of your bill stub and return to us with a check for your payment amount. It's that easy!

**ACCOUNT SUMMARY**

Previous gas amount due	\$ 67.08
Payment Dec 7, 2017	- 67.08
Current gas charges (Details on page 2)	+ 91.18
<b>Total amount due</b>	<b>\$ 91.18</b>

Thank you!

APPROVED  
COUNTY AUDITOR  
K.H. BB

Your account is ready to view now. Register for free online account access. View balance, usage history, make an online payment, view recommendations for saving energy and money with My Energy Analyzer, and much more. Register at [CenterPointEnergy.com/myaccount](http://CenterPointEnergy.com/myaccount).

C.F.

Code 010-54410-615 K.H.  
Blessing Com. Center

PAID  
DEC 27 2017  
DB

**How to pay your bill**

**Online**  
Visit: [CenterPointEnergy.com/paybill](http://CenterPointEnergy.com/paybill) Pay immediately, schedule a payment or set up automatic monthly payments.

**Phone**  
Call 800-427-7142 and make a payment using your checking or savings account, or by debit or credit card.

**In person**  
To find a payment location, visit: [CenterPointEnergy.com/paybill](http://CenterPointEnergy.com/paybill) or call 800-427-7142.

**Mail**  
Return the payment stub below, with your check or money order, using the return envelope.

Please keep this portion for your records

**CUSTOMER**  
MATAGORDA COUNTY PRCT #4  
DBA BLESSING CMNTY CTR

**SERVICE ADDRESS**  
734 Fm 616, Blessing, TX 77419

**ACCOUNT NUMBER**  
2876939-6  
**DATE MAILED**  
Dec 21, 2017

**DATE DUE** Jan 05, 2018  
**AMOUNT DUE** \$ 91.18

Rate: GSS-2085-GRIP 2017 @14.95 Pressure Base

**DEFINITIONS**

**CCF** 1 CCF = 100 cubic feet of gas. This is how we measure your monthly usage.

**Customer charge and base amount.** Covers fixed costs for reading meters, issuing bills, maintaining facilities and gas lines, postage, etc. These costs occur even if you do not use gas during a billing period.

**Gas Cost Adjustment (GCA)** is the cost CenterPoint Energy pays for the gas it delivers to its customers.

**Storage inventory charge** allows the Company the opportunity to recover the regulated carrying cost of its investment in storage.

**Reimbursement of local franchise fee** is a fee paid to the city for the company's use of right-of-way in streets and alleys.

**Reimbursement of state gross receipts tax** is a tax imposed by the State of Texas on each utility company located in an incorporated city having a population of more than 1,000.

For a more detailed description of each of the terms used on your bill, please visit [CenterPointEnergy.com/definitions](http://CenterPointEnergy.com/definitions) or call Customer Support at 800-427-7142.

**Current gas charges**

**Meter Number** 3108800369975  
**Day Billing Period** 29

Billing Period	Current Reading	Previous Reading	=	Usage
11/16/17 - 12/15/17	9451	9375		76 CCF
				\$ 38.87
Customer charge *				0.20
Storage inventory charge		76 CCF x \$ 0.00265		8.11
Base amount		76 CCF x \$ 0.10670		44.00
Gas cost adjustment		76 CCF x \$ 0.57894		
<b>Total current charges</b>				<b>\$ 91.18</b>

The customer charge includes the current GRIP surcharge of \$4.13.

**Your account, managed your way**

Sign up at [CenterPointEnergy.com/myaccount](http://CenterPointEnergy.com/myaccount)

- **24/7 online account access.** View and/or pay your bill, view usage history, sign up for account services and much more.
- **Go paperless.** Receive an email when your bill is ready to view and pay. Get convenience, get rid of clutter.

- **Pay automatically.** Set up AutoPay by signing and returning the form below with your check payment. It's that easy!
- **Even out the highs and lows of your monthly bills.** Enroll in Average Monthly Billing and spread your natural gas costs throughout the year.
- **Get bill reminders.** Choose text or email, up to five days before your bill is due.

- **Other services.** Report a payment made at a payment location, set up a payment extension and much more. View options from your online account or visit [CenterPointEnergy.com/selfservice](http://CenterPointEnergy.com/selfservice) if you'd prefer not to register.
- **Moving?** Please call us at 800-427-7142 at least two weeks before you move, or complete the forms at [CenterPointEnergy.com/selfservice](http://CenterPointEnergy.com/selfservice)

Mail payments to CenterPoint Energy, PO Box 4981, Houston, TX 77210-4981



CenterPointEnergy.com

CUSTOMER  
COUNTY BARN PRECINCT 3

2254

ACCOUNT NUMBER  
2904139-9

Your account is past due.

DATE MAILED  
Dec 21, 2017

TOTAL DUE

\$ 83.50

SERVICE ADDRESS  
405 Commerce St, Palacios, TX 77465

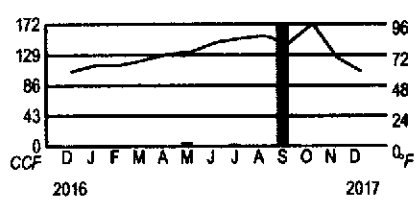
**Gas leak or emergency**  
Leave immediately, then call  
888-876-5786, 24 hours a day

**Customer service**  
800-427-7142 toll-free  
Monday - Friday, 7 am - 7 pm

**Call before you dig**  
Call 811  
24 hours a day

**Comments**  
PO Box 2628  
Houston, TX 77252-2628

**Your usage in a glance**



Previous usage	Usage this month		Average daily temperature	
	1 year ago	Last month	Last month	This month
Total CCF used	2	0	58	58
Average daily gas use (CCF)	0.1	0.0	69	69
Average daily temperature	58	69	29	29
Days in billing period	33	29		

To better understand your home energy usage and learn energy savings tips, visit [CenterPointEnergy.com/myenergyanalyzer](http://CenterPointEnergy.com/myenergyanalyzer)

To report gas leaks, carbon monoxide and other gas emergencies, please call 1-888-876-5786. We appreciate your understanding that billing inquiries cannot be answered on this line.

**ACCOUNT SUMMARY**

Previous gas amount due		\$ 41.38
Payment	No payment received.	- 0.00
Past due gas charges due immediately	pd ch # 79278 12-16-17	\$ 41.38
Current gas charges due Jan 5, 2018 (Details on page 2)		+ 42.12
<b>Total amount due</b>		<b>\$ 83.50</b>

AB KU  
APPROVED  
COUNTY AUDITOR

Your account is ready to view now. Register for free online account access. View balance, usage history, make an online payment, view recommendations for saving energy and money with My Energy Analyzer, and much more. Register at [CenterPointEnergy.com/myaccount](http://CenterPointEnergy.com/myaccount).

0/0 54410 6/4  
ALT

RECEIVED  
DEC 27 2017  
BY: AB

**How to pay your bill**

**Online**  
Visit: [CenterPointEnergy.com/paybill](http://CenterPointEnergy.com/paybill) Pay immediately, schedule a payment or set up automatic monthly payments.

**Phone**  
Call 800-427-7142 and make a payment using your checking or savings account, or by debit or credit card.

**In person**  
To find a payment location, visit: [CenterPointEnergy.com/paybill](http://CenterPointEnergy.com/paybill) or call 800-427-7142.

**Mail**  
Return the payment stub below, with your check or money order, using the return envelope.

Please keep this portion for your records

**CUSTOMER**  
COUNTY BARN PRECINCT 3

**ACCOUNT NUMBER**  
2904139-9

**Your account is past due.**

**SERVICE ADDRESS**  
405 Commerce St, Palacios, TX 77465

**DATE MAILED**  
Dec 21, 2017

**TOTAL DUE** **\$ 83.50**

**DEFINITIONS**

**CCF** 1 CCF = 100 cubic feet of gas. This is how we measure your monthly usage.

**Customer charge and base amount.** Covers fixed costs for reading meters, issuing bills, maintaining facilities and gas lines, postage, etc. These costs occur even if you do not use gas during a billing period.

**Gas Cost Adjustment (GCA)** is the cost CenterPoint Energy pays for the gas it delivers to its customers.

**Storage inventory charge** allows the Company the opportunity to recover the regulated carrying cost of its investment in storage.

**Reimbursement of local franchise fee** is a fee paid to the city for the company's use of right-of-way in streets and alleys.

**Reimbursement of state gross receipts tax** is a tax imposed by the State of Texas on each utility company located in an incorporated city having a population of more than 1,000.

For a more detailed description of each of the terms used on your bill, please visit [CenterPointEnergy.com/definitions](http://CenterPointEnergy.com/definitions) or call Customer Support at 800-427-7142.

**Current gas charges**

Rate: GSS-2005-GRIP 2017 @14.95 Pressure Base

**Meter Number**    **Day Billing Period**  
3828200587513    29

Billing Period	Current Reading	- Previous Reading	= Total	x	Combined pressure factor	Adjusted Usage
11/16/17 - 12/15/17	9319	9318	1		1.14020	1 CCF
<b>Customer charge *</b>						<b>\$ 38.87</b>
<b>Base amount</b>				1 CCF x \$ 0.10670		0.11
<b>Gas cost adjustment</b>				1 CCF x \$ 0.57894		0.58
<b>Reimbursement of local franchise fee</b>						2.11
<b>Reimbursement of State GRT</b>						0.45
<b>Total current charges</b>						<b>\$ 42.12</b>

The customer charge includes the current GRIP surcharge of \$4.13.

**Your account, managed your way**

Sign up at [CenterPointEnergy.com/myaccount](http://CenterPointEnergy.com/myaccount)

- **24/7 online account access.** View and/or pay your bill, view usage history, sign up for account services and much more.
- **Go paperless.** Receive an email when your bill is ready to view and pay. Get convenience, get rid of clutter.

● **Pay automatically.** Set up AutoPay by signing and returning the form below with your check payment. It's that easy!

● **Even out the highs and lows of your monthly bills.** Enroll in Average Monthly Billing and spread your natural gas costs throughout the year.

● **Get bill reminders.** Choose text or email, up to five days before your bill is due.

● **Other services.** Report a payment made at a payment location, set up a payment extension and much more. View options from your online account or visit [CenterPointEnergy.com/selfservice](http://CenterPointEnergy.com/selfservice) if you'd prefer not to register.

● **Moving?** Please call us at 800-427-7142 at least two weeks before you move, or complete the forms at [CenterPointEnergy.com/selfservice](http://CenterPointEnergy.com/selfservice)

Mail payments to CenterPoint Energy, PO Box 4981, Houston, TX 77210-4981



*Give the gift of warmth  
this holiday*

Lend a helping hand to families who are unable to pay their heating bills. Make a tax-deductible contribution today.

**CenterPointEnergy.com/CareFund**

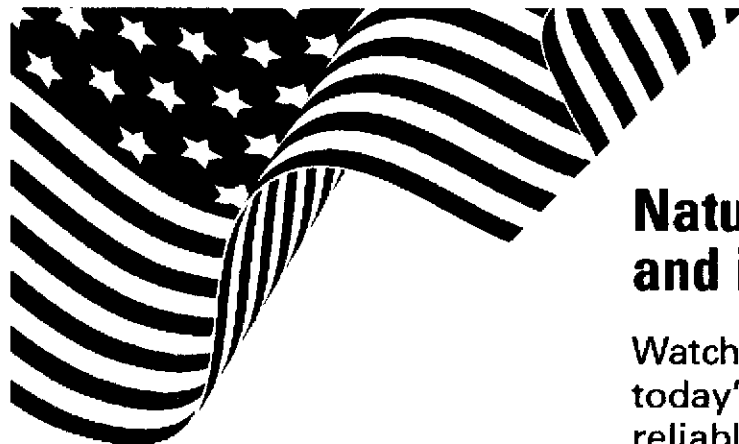
150368\_CNP



Manage your account your way with  
**CenterPointEnergy.com/MyAccount**

- ✓ **View bill**
  - You can also print and save
- ✓ **Pay your bill**
- ✓ **Turn off paper bills**
- ✓ **Set up payment preferences**
  - Schedule a payment
  - Set up recurring payments
- ✓ **Set up bill preferences**
  - Set up balanced monthly payments
  - Set up payment reminders
- ✓ **Request credit reference letter**
- ✓ **Use free energy tools**
  - View your usage history
  - Get custom report with My Energy Analyzer
  - Track a service appointment
- ✓ **Start-Stop-Transfer service**
- ✓ **Report a payment made**
- ✓ **Having trouble paying?**
  - Extend payment due date
  - Set up a payment plan
  - Reconnect service if disconnected for nonpayment

150207\_CNP



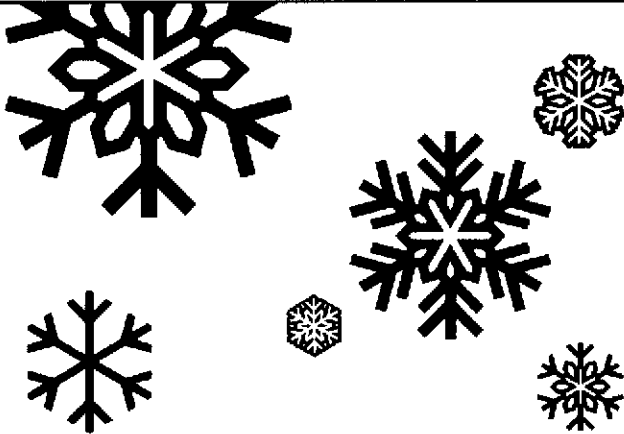
**Natural gas is made in America  
and it's making America stronger.**

Watch this one-minute video to learn about today's natural gas — America's safe, clean, reliable and affordable fuel.

**CenterPointEnergy.com/MeetNaturalGas**

175154\_CNP

December, 2017

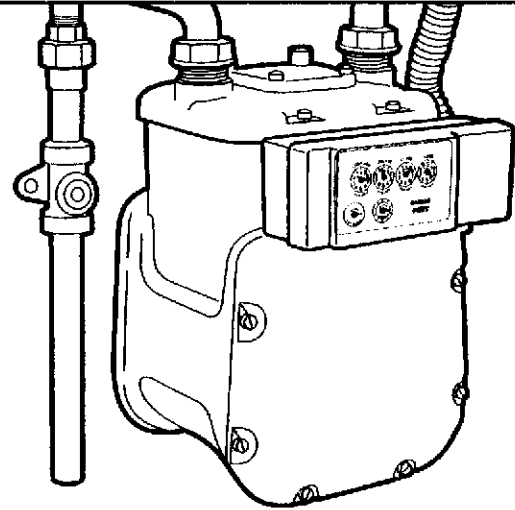


## Get Ready for Winter

- Lower your thermostat to 68 F when you're home and 65 F when you're not or at night
- Install a programmable thermostat
- Check your heater/furnace filter monthly and change when dirty
- Tune up your heater/furnace to ensure safe, efficient operation
- Seal and caulk windows and doors
- Enroll in Average Monthly Billing to avoid high winter bill peaks

**CenterPointEnergy.com/ReadyForWinter**

150205\_CNP



## Keep your meter functioning properly during cold weather

- Keep the path and area around meter free of leaves, debris.
- Use a broom rather than gasoline- or electric-powered equipment to clear debris around and on top of the meter set assembly.
- Do not attempt to remove ice buildup from the meter.

If the meter is encased in ice or is located in an area where there is ice buildup, report it to Customer Service using the phone number on the front of your bill.

**CenterPointEnergy.com/MeterSafety**

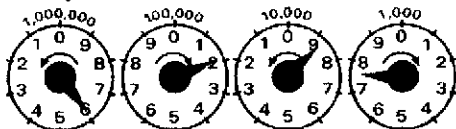
150764\_TX\_LA\_MS

## A safety message from CenterPoint Energy

**If you smell natural gas, leave immediately. Call our Gas Leak Hotline at 800-296-9615.** Do not use or store flammable products such as gasoline in the same room or area near the water heater or any other gas appliance.

**Si percibes un olor a gas natural, sal inmediatamente. Llama a nuestra línea telefónica para fugas de gas a uno de los números de teléfono que aparecen arriba.** No use ni almacene productos inflamables tales como gasolina en la misma habitación o en áreas cercanas a un calentador de agua u otro tipo de aparato a gas.

### How to read your meter



The following is an example of how to read a typical meter index.

Look at the four dials with their curved arrows. Read from right to left as follows:

1. Read the "thousand-foot" dial as 7, the last number that the pointer passed. Note that the curved arrow on the dial shows a clockwise movement of the pointer.
2. Read the next dial, the "100-thousand" dial. The curved arrow on the dial above shows a

counterclockwise direction. The pointer is near the 9, but to be sure whether to read it as that number or the lower number 8, the previously mentioned "same or lower number rule" must be applied. Since the pointer in the "thousand-foot" dial to the right is nearer the 8 and the pointer has not reached the 0, the "100-thousand" dial should be read as 8.

3. Read the "100-thousand" dial, it seems to point to 2. Double check by using the rule above. Since the pointer of the "10-thousand" dial is between 8 and 9, take the lower reading number, 1, for the "100-thousand" dial.

4. Read the left-most dial the "million-foot" dial. The pointer is near the 6. Using the "same or lower number rule", we find the pointer on the dial to the right is between 1 and 2, so we read the "million-foot" dial exactly as the number it is on or near, 6.

The entire meter reading is 6187.

**CUSTOMER**  
COUNTY BARN PRECINCT 3

2254

**ACCOUNT NUMBER**  
6401111506-6

**Your account is past due.**

**DATE MAILED**  
Dec 21, 2017

**TOTAL DUE**

**\$ 77.74**

**SERVICE ADDRESS**  
25000 State Highway 35 S, Palacios, TX 77465-1920

**DEC 28 2017**

**Gas leak or emergency**  
Leave immediately, then call  
888-876-5786, 24 hours a day

**Customer service**  
800-427-7142 toll-free  
Monday - Friday, 7 am - 7 pm

**Call before you dig**  
Call 811  
24 hours a day

**Comments**  
PO Box 2628  
Houston, TX 77252-2628

To report gas leaks, carbon monoxide and other gas emergencies, please call 1-888-876-5786. We appreciate your understanding that billing inquiries cannot be answered on this line.

**ACCOUNT SUMMARY**

Previous gas amount due		\$ 38.87
Payment	No payment received.	- 0.00
Past due gas charges due immediately	pd ck# 79278 12/18/17	\$ 38.87
Current gas charges due Jan 5, 2018 (Details on page 2)		+ 38.87
<b>Total amount due</b>		<b>\$ 77.74</b>

APPROVED DB  
COUNTY AUDITOR KU

Your account is ready to view now. Register for free online account access. View balance, usage history, make an online payment, view recommendations for saving energy and money with My Energy Analyzer, and much more. Register at [CenterPointEnergy.com/myaccount](http://CenterPointEnergy.com/myaccount).

010 54410614

AT

RECEIVED  
DEC 27 2017

BY: DB

**How to pay your bill**

**Online**  
Visit: [CenterPointEnergy.com/paybill](http://CenterPointEnergy.com/paybill) Pay immediately, schedule a payment or set up automatic monthly payments.

**Phone**  
Call 800-427-7142 and make a payment using your checking or savings account, or by debit or credit card.

**In person**  
To find a payment location, visit: [CenterPointEnergy.com/paybill](http://CenterPointEnergy.com/paybill) or call 800-427-7142.

**Mail**  
Return the payment stub below, with your check or money order, using the return envelope.

**CUSTOMER**  
COUNTY BARN PRECINCT 3

**ACCOUNT NUMBER**  
6401111506-6  
**DATE MAILED**  
Dec 21, 2017

**Your account is past due.**  
**TOTAL DUE**                    **\$ 77.74**

**SERVICE ADDRESS**  
25000 State Highway 35 S, Palacios, TX 77465-1920

Rate: GSS-2085-GRIP 2017 @14.95 Pressure Base

**DEFINITIONS**

**CCF** 1 CCF = 100 cubic feet of gas. This is how we measure your monthly usage.

**Customer charge and base amount.** Covers fixed costs for reading meters, issuing bills, maintaining facilities and gas lines, postage, etc. These costs occur even if you do not use gas during a billing period.

**Gas Cost Adjustment (GCA)** is the cost CenterPoint Energy pays for the gas it delivers to its customers.

**Storage inventory charge** allows the Company the opportunity to recover the regulated carrying cost of its investment in storage.

**Reimbursement of local franchise fee** is a fee paid to the city for the company's use of right-of-way in streets and alleys.

**Reimbursement of state gross receipts tax** is a tax imposed by the State of Texas on each utility company located in an incorporated city having a population of more than 1,000.

For a more detailed description of each of the terms used on your bill, please visit [CenterPointEnergy.com/definitions](http://CenterPointEnergy.com/definitions) or call Customer Support at 800-427-7142.

**Current gas charges**

**Meter Number**    **Day Billing Period**  
3731506736444    29

Billing Period	Current Reading	Previous Reading	=	Usage
11/16/17 - 12/15/17	0	0		0 CCF
Customer charge *				\$ 38.87
<b>Total current charges</b>				<b>\$ 38.87</b>

The customer charge includes the current GRIP surcharge of \$4.13.

**Your account, managed your way**

Sign up at [CenterPointEnergy.com/myaccount](http://CenterPointEnergy.com/myaccount)

- **24/7 online account access.** View and/or pay your bill, view usage history, sign up for account services and much more.
- **Go paperless.** Receive an email when your bill is ready to view and pay. Get convenience, get rid of clutter.

- **Pay automatically.** Set up AutoPay by signing and returning the form below with your check payment. It's that easy!
- **Even out the highs and lows of your monthly bills.** Enroll in Average Monthly Billing and spread your natural gas costs throughout the year.
- **Get bill reminders.** Choose text or email, up to five days before your bill is due.

- **Other services.** Report a payment made at a payment location, set up a payment extension and much more. View options from your online account or visit [CenterPointEnergy.com/selfservice](http://CenterPointEnergy.com/selfservice) if you'd prefer not to register.
- **Moving?** Please call us at 800-427-7142 at least two weeks before you move, or complete the forms at [CenterPointEnergy.com/selfservice](http://CenterPointEnergy.com/selfservice)

Mail payments to CenterPoint Energy, PO Box 4981, Houston, TX 77210-4981





*Give the gift of warmth  
this holiday*

Lend a helping hand to families who are unable to pay their heating bills. Make a tax-deductible contribution today.

**CenterPointEnergy.com/CareFund**

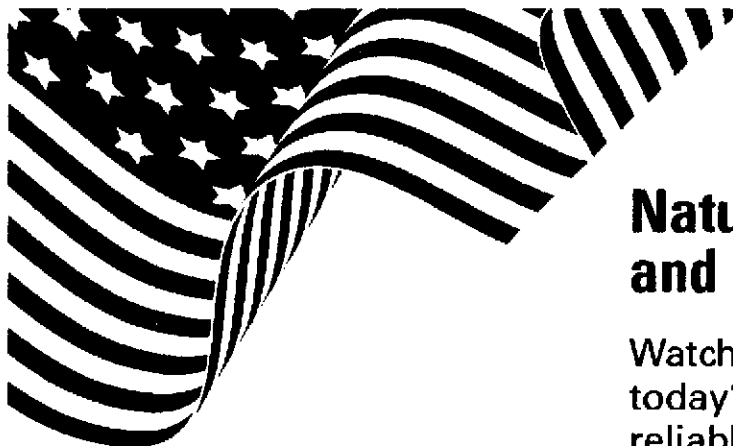
150368\_CNP



Manage your account your way with  
**CenterPointEnergy.com/MyAccount**

- ✓ **View bill**
  - You can also print and save
- ✓ **Pay your bill**
- ✓ **Turn off paper bills**
- ✓ **Set up payment preferences**
  - Schedule a payment
  - Set up recurring payments
- ✓ **Set up bill preferences**
  - Set up balanced monthly payments
  - Set up payment reminders
- ✓ **Request credit reference letter**
- ✓ **Use free energy tools**
  - View your usage history
  - Get custom report with My Energy Analyzer
  - Track a service appointment
- ✓ **Start-Stop-Transfer service**
- ✓ **Report a payment made**
- ✓ **Having trouble paying?**
  - Extend payment due date
  - Set up a payment plan
  - Reconnect service if disconnected for nonpayment

150207\_CNP



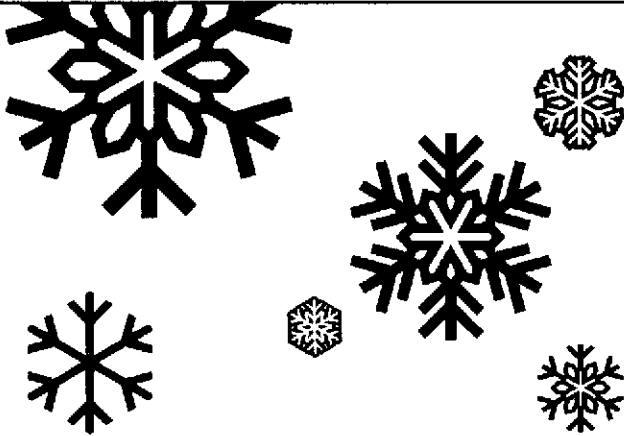
**Natural gas is made in America  
and it's making America stronger.**

Watch this one-minute video to learn about today's natural gas — America's safe, clean, reliable and affordable fuel.

**CenterPointEnergy.com/MeetNaturalGas**

176154\_CNP

December, 2017

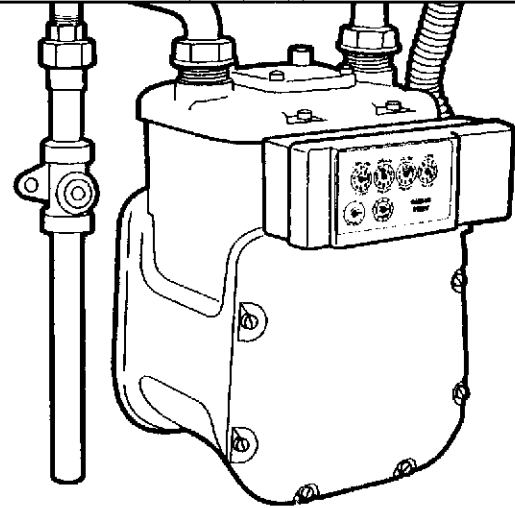


## Get Ready for Winter

- Lower your thermostat to 68 F when you're home and 65 F when you're not or at night
- Install a programmable thermostat
- Check your heater/furnace filter monthly and change when dirty
- Tune up your heater/furnace to ensure safe, efficient operation
- Seal and caulk windows and doors
- Enroll in Average Monthly Billing to avoid high winter bill peaks

**CenterPointEnergy.com/ReadyForWinter**

150205\_CNP



## Keep your meter functioning properly during cold weather

- Keep the path and area around meter free of leaves, debris.
- Use a broom rather than gasoline- or electric-powered equipment to clear debris around and on top of the meter set assembly.
- Do not attempt to remove ice buildup from the meter.

If the meter is encased in ice or is located in an area where there is ice buildup, report it to Customer Service using the phone number on the front of your bill.

**CenterPointEnergy.com/MeterSafety**

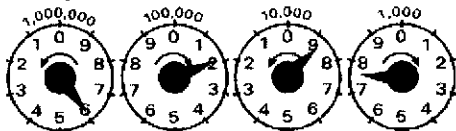
150764\_IX\_LA\_MS

## A safety message from CenterPoint Energy

**If you smell natural gas, leave immediately. Call our Gas Leak Hotline at 800-296-9815.** Do not use or store flammable products such as gasoline in the same room or area near the water heater or any other gas appliance.

**Si percibes un olor a gas natural, sal inmediatamente. Llama a nuestra línea telefónica para fugas de gas a uno de los números de teléfono que aparecen arriba.** No use ni almacene productos inflamables tales como gasolina en la misma habitación o en áreas cercanas a un calentador de agua u otro tipo de aparato a gas.

### How to read your meter



The following is an example of how to read a typical meter index.

Look at the four dials with their curved arrows. Read from right to left as follows:

1. Read the "thousand-foot" dial as 7, the last number that the pointer passed. Note that the curved arrow on the dial shows a clockwise movement of the pointer.
2. Read the next dial, the "10-thousand" dial. The curved arrow on the dial above shows a

counterclockwise direction. The pointer is near the 9, but to be sure whether to read it as that number or the lower number 8, the previously mentioned "same or lower number rule" must be applied. Since the pointer in the "thousand-foot" dial to the right is nearer the 8 and the pointer has not reached the 0, the "10-thousand" dial should be read as 8.

3. Read the "100-thousand" dial, it seems to point to 2. Double-check by using the rule above. Since the pointer of the "10-thousand" dial is between 8 and 9, take the lower reading number, 1, for the "100-thousand" dial.

4. Read the left-most dial, the "million-foot" dial. The pointer is near the 6. Using the "same or lower number rule", we find the pointer on the dial to the right is between 1 and 2, so we read the "million-foot" dial exactly as the number it is on or near, 6.

The entire meter reading is 6187.