



2068

Payment Due By

Dec 31, 2012

Amount Due

\$35.14

After Due Date

\$36.90

2012

To avoid a late payment charge of 5%, please pay the amount on your bill by the due date.

Account Information

Account Number: 15574080
Customer Name: MATAGORDA COUNTY FAIRGROUNDS
Service Address: FM 2668 / Fairgrounds BAY CITY, TX 77414
Invoice Number: 1094366395
Bill Date: Dec 13, 2012
Service Period: Nov 05, 2012 to Dec 06, 2012

Account Summary

Table with 2 columns: Description, Amount. Rows include Previous Balance (\$35.14), Payment Received - Nov 30, 2012 - Thank You! (\$35.14 CR), Balance (\$0.00), Current Charges (Base Charge \$24.09, Transmission Distribution Surcharges \$11.05), Total Current Charges (\$35.14), Total Amount Due (\$35.14).

*Regulated fees charged by your local Transmission and Distribution Utility (TDU).

Important Messages

>>TDU estimated usage<<
Your usage for this billing period is an estimate based on information provided by TDU.

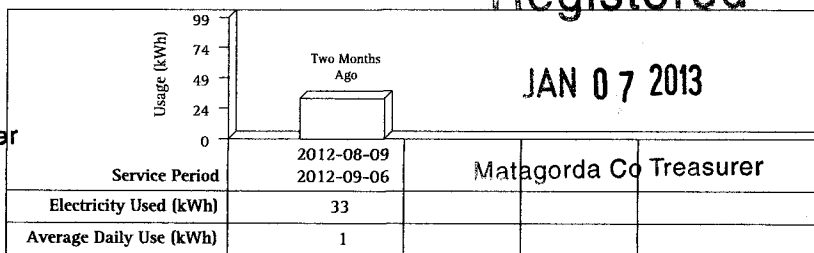
Receive our monthly electronic newsletter featuring market outlooks, expert analysis from Direct Energy Business, and other news you can use to efficiently manage your energy needs.

112557

Registered

JAN 07 2013

Your Electric Usage



For more information on how to save electricity, visit us at www.cplretailenergy.com/EN/Energy-Saving-Center.

10-661-441
DEC 31 2012
APPROVED COUNTY AUDITOR

www.cplretailenergy.com/customer care

Customer Service & Moving
Mon - Sat 7:30am - 5pm CST
1-866-322-5563

Power Failure & Emergencies
24 hours, 7 days a week
1-866-223-8508

For information about monthly variable pricing, log on to www.cplretailenergy.com/variableprice



Other Ways to Pay Your Bill

- Online Account Manager: Pay online at www.cplretailenergy.com/youraccount
- Automatic Payment Program: Monthly payments automatically debited from your credit card, checking or savings account.
- Over the phone: 1-866-463-8433 (toll free).
- In Person: Visit www.cplretailenergy.com/payinperson for participating locations.

Manage Your Account Online

Did you know CPL Retail Energy's Online Account Manager lets you make online payments, sign up for paperless E-Bill statements, and update your email address? Visit us online today at www.cplretailenergy.com/youraccount

Notice to Customers

If you believe this invoice includes unauthorized charges, you may contact the Customer Service Department to dispute such charges, and you may file a complaint with the Public Utility Commission of Texas: P.O. Box 13326, Austin, Texas 78711-3326 telephone: (512) 936-7120 or toll-free in Texas: (888) 782-8477 or hearing and speech-impaired individuals with text telephone (TTY) (512) 936-7136.

Electricity Account Details

ESI ID Number: 10032789420166760
 Service Period: Nov 05, 2012 to Dec 06, 2012

Meter# 428975036
 Days Billed This Period: 31

Your Meter Readings:

Service Period	Previous	Current	Difference	Multipliers	Usage
Nov 05, 2012 to Dec 06, 2012	1462	1462 (estimated)	0	1	0 kWh
Nov 05, 2012 to Dec 06, 2012					1 kW

The average price you paid for electric service this month was \$0.080 / kWh (details above)

4749-01-00-0013950-0001-0021913



Glossary of Terms

Service Period: Indicates the period of time for which you are being billed for your electricity service.

kW - Kilowatt: The standard unit for measuring electricity demand, equal to 1000 watts.

kWh - Kilowatt-hour: The standard unit for measuring electricity energy consumption, equal to 1000 watt-hours.

kVa - Kilovolt Amperes: The apparent power of an electrical distribution system (usually applicable to commercial usage).

Base Charge: A charge assessed during each billing cycle without regard to the customer's demand or energy consumption.

Energy Charge: A charge based on the electric energy (kWh) consumed.

Demand Charge: A charge based on the rate at which electric energy is delivered to or by a system at a given instant, or averaged over a designed period, during the billing cycle.

Due Date: The date the payment must be received and posted to avoid a 5% late payment charge.

Estimated Reading: During any month when the Transmission and Distribution Utility fails to provide an actual meter reading on a timely basis, an estimate of your usage will be used to generate your electric bill. Adjustments are made in subsequent bills if required, when an actual meter reading is provided.

Late Payment Penalty: A charge assessed for late payment in accordance with the Public Utility Commission rules.

Advanced Metering Charge: A charge assessed to recover a TDU's charges for Advanced Metering systems, to the extent that they are not recovered in a TDU's standard metering charge.

Energy Efficiency Cost Recovery Factor: A charge assessed to recover a TDU's costs for energy efficiency programs, to the extent that the TDU charge is a separate charge exclusively for that purpose that is approved by the Public Utility Commission.

Sales Tax: Sales tax collected by authorized taxing authorities, such as the state, cities and special purpose districts.

Transmission Distribution Surcharges: One or more TDU surcharge(s) on a customer's bill in any combination. Surcharges include charges billed as tariff riders by the TDUs.

Miscellaneous Gross Receipts Tax Reimbursement: A fee assessed to recover the miscellaneous gross receipts tax imposed on retail electric providers operating in an incorporated city or town having a population of more than 1000.

Collection Recovery Fee: This fee is to recover the cost of collection efforts made to collect on the past due balance.

4749-01-00-0013850-0002-0021912



QUESTIONS OR COMMENTS?

CenterPoint Energy
PO BOX 2628
HOUSTON TX 77252-2628
Billing & Service 1-800-427-7142
Monday-Friday Call 7 a.m. - 7 p.m.
CenterPointEnergy.com

112558

YOUR ACCOUNT IS PAST DUE

YOUR LAST DAY TO PAY THE PAST DUE AMOUNT OF \$60.70 IS ON 01/05/2013 TO AVOID YOUR SERVICE BEING DISCONNECTED.

THIS IS THE ONLY CUT-OFF NOTICE YOU WILL RECEIVE.

Keep this part of your bill.

Customer name MATAGORDA COUNTY PRCT #4
2254 DBA BLESSING CMNTY CTR
Account number 2876939-6
Date mailed 12/26/2012
Date due 01/10/2013
Total amount due \$ 101.75

ACCT SUMMARY

Previous balance \$3.77
Payment 12/07/2012 24.72
Payment correction 12/07/2012 85.42
Payment 12/13/2012 -53.21
Balance forward \$ 60.70
Current billing -41.05
Total amount due ~~\$101.75~~

DEC 31 2012

Registered *pd*

JAN 07 2013

SERVICE ADDRESS

734 Fm 616
Blessing TX 77419 Matagorda Co Treasurer

YOUR GAS USAGE

33 Day billing period 11/16/2012 to 12/19/2012 Meter # 3108800369975
Current reading 12/19/2012 7557
Previous reading 11/16/2012 7529
Metered Usage 1 CCF = 100 cubic feet of gas 28

YOUR BILL IN DETAIL

Customer charge GSS-2085-GRIP 2012 \$22.67
Base amount 28 CCF @ \$0.10670/CCF 2.99
Gas cost adjustment 28 CCF @ \$0.53893/CCF 15.09
Rate case surcharge 0.30

Total current charges \$41.05

IMPORTANT NOTICE TO TEXAS CUSTOMERS

The bill for your natural gas service is seriously past due. Please note that your regular bill also serves as a "Disconnect Notice" and should receive your immediate attention.

If your payment is not received in our office by the specified date for the past due balance, a collection charge may be made or your service may be disconnected without further notice.

If service is disconnected, you must pay your bill in full in addition to a reconnect charge. Your deposit requirement will be re-evaluated and may be increased if necessary to cover payment for future service.

APPROVED COUNTY AUDITOR

Code 615-441 K.H. *D.H.* 2012

693

A SAFETY MESSAGE FROM CENTERPOINT ENERGY

Do not use or store flammable products such as gasoline in the same room or area near the water heater or any other gas appliance.

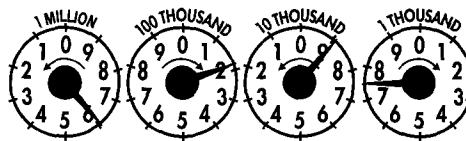
No use ni almacene productos inflamables tales como gasolina en la misma habitación o en áreas cercanas a un calentador de agua u otro tipo de aparato a gas.

UNDERSTANDING YOUR BILL

Payment arrangements. If you need to make payment arrangements on your gas bill, or enter into a delayed payment agreement, please call the local or toll free number listed on the front of your bill.

Additional services. Additional services also include the following: Automatic Bank Draft, Average Monthly Billing, third party billing, assistance to elderly and handicapped customers, notification of certified medical emergency and Energy Assistance Programs.

The following is an example of how to read a typical meter index:



Look at the four dials with their curved arrows. Read from right to left as follows:

1. Read the "thousand-foot" dial as 7, the last number that the pointer passed. Note that the curved arrow on the dial shows a clockwise movement of the pointer.
2. Read the next dial, the "10-thousand" dial. The curved arrow on the dial above shows a counterclockwise direction. The pointer is near the 9, but to be sure whether to read it as that number or the lower number 8, the previously mentioned "Same or Lower Number Rule" must be applied. Since the pointer in the "thousand-foot" dial to the right is nearer the 8 and the pointer has not reached the 0, the "10-thousand" dial should be read as 8.
3. Read the "100-thousand" dial, it seems to point to 2. Double-check by using the rule above. Since the pointer of the "10-thousand" dial is between 8 and 9, take the lower reading number, 1, for the "100-thousand" dial.
4. Read the left-most dial, the "million-foot" dial. The pointer is near the 6. Using the "Same or Lower Number Rule," we find the pointer on the dial to the right is between 1 and 2, so we read the "million-foot" dial exactly as the number it is on or near, 6.

The entire meter reading is 6187.

Customer name	MATAGORDA COUNTY PRCT #4 DBA BLESSING CMNTY CTR
Account number	2876939-6
Date mailed	12/26/2012
Date due	01/10/2013
Total amount due	\$ 101.75

QUESTIONS OR COMMENTS?

If you or any permanent occupant of your premises is seriously ill, or may be made seriously ill by discontinuance of service, a limited extension of time may be obtained if requested before the disconnect date shown on the bill and supported by a hand written statement by a licensed physician.

The address, telephone number, and office hours of your local CenterPoint Energy office are shown in the upper left hand corner of your bill.

If you have already paid the amount noted as past due, please disregard this notice.

AVISO DE DESCONEXIÓN

AVISO IMPORTANTE - CLIENTES DE TEXAS

La cuenta de tu servicio de gas natural está seriamente vencida. Por favor ten en cuenta que tu cuenta regular también sirve como un "Aviso de Desconexión" y es importante que lo atiendas de inmediato.

Si tu pago no es recibido en nuestra oficina en la fecha indicada para el saldo vencido, se podrá hacer un cargo por cobranza o tu servicio podrá ser desconectado sin nuevo aviso.

Si el servicio es desconectado será necesario que pagues el total de la cuenta, además de un cargo por reconexión. Tus requisitos de depósito serán re-evaluados y éste podrá ser aumentado si es necesario para cubrir el pago por servicio futuro.

Si tú o cualquier ocupante permanente del inmueble está gravemente enfermo o puede ponerse gravemente enfermo por la suspensión del servicio, se podrá obtener una prórroga limitada si ésta es solicitada antes de la fecha de desconexión que aparece en la cuenta, y es respaldada por un informe escrito a mano proveniente de un médico autorizado.

La dirección, el número de teléfono y horas de oficina de tu oficina local de CenterPoint Energy aparecen en el ángulo superior izquierdo de tu cuenta.

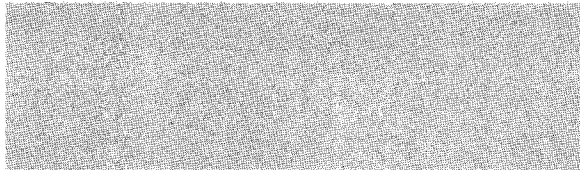
Si ya pagaste la cantidad indicada como vencida, por favor haz caso omiso de este aviso.

**EL PAGO DE TU
CUENTA ESTÁ
VENCIDO**

**EL ÚLTIMO DÍA PARA
PAGAR TU MONTO
VENCIDO DE \$60.70
ES EL 01/05/2013 PARA
EVITAR QUE TU
SERVICIO SEA
DESCONECTADO.**

**ÉSTE ES EL
ÚNICO AVISO
DE CORTE
QUE
RECIBIRÁS.**

693



Always There.®

A SAFETY MESSAGE FROM CENTERPOINT ENERGY

Do not use or store flammable products such as gasoline in the same room or area near the water heater or any other gas appliance.

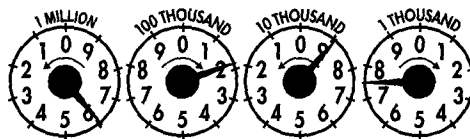
No use ni almacene productos inflamables tales como gasolina en la misma habitación o en áreas cercanas a un calentador de agua u otro tipo de aparato a gas.

UNDERSTANDING YOUR BILL

Payment arrangements. If you need to make payment arrangements on your gas bill, or enter into a delayed payment agreement, please call the local or toll free number listed on the front of your bill.

Additional services. Additional services also include the following: Automatic Bank Draft, Average Monthly Billing, third party billing, assistance to elderly and handicapped customers, notification of certified medical emergency and Energy Assistance Programs.

The following is an example of how to read a typical meter index:



Look at the four dials with their curved arrows. Read from right to left as follows:

1. Read the "thousand-foot" dial as 7, the last number that the pointer passed. Note that the curved arrow on the dial shows a clockwise movement of the pointer.
2. Read the next dial, the "10-thousand" dial. The curved arrow on the dial above shows a counterclockwise direction. The pointer is near the 9, but to be sure whether to read it as that number or the lower number 8, the previously mentioned "Same or Lower Number Rule" must be applied. Since the pointer in the "thousand-foot" dial to the right is nearer the 8 and the pointer has not reached the 0, the "10-thousand" dial should be read as 8.
3. Read the "100-thousand" dial, it seems to point to 2. Double-check by using the rule above. Since the pointer of the "10-thousand" dial is between 8 and 9, take the lower reading number, 1, for the "100-thousand" dial.
4. Read the left-most dial, the "million-foot" dial. The pointer is near the 6. Using the "Same or Lower Number Rule," we find the pointer on the dial to the right is between 1 and 2, so we read the "million-foot" dial exactly as the number it is on or near, 6.

The entire meter reading is 6187.

ONLINE BILLING.

Pay at CenterPointEnergy.com.
Go to your service area and select Online Billing to view and pay your monthly bill online.

MOVING? Please call us at the number on the front of this bill at least two weeks before you move, or let us know online at CenterPointEnergy.com. We will take gas service out of your name at your old address and make sure you have gas service at your new address when you need it. Thank you.

Keep this part of your bill.

Customer name	MATAGORDA COUNTY PRCT #4 DBA BLESSING CMNTY CTR
Account number	2876939-6
Date mailed	12/26/2012
Date due	01/10/2013
Total amount due	\$ 101.75

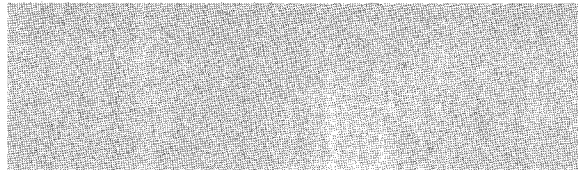
QUESTIONS OR COMMENTS?

CenterPoint Energy
PO BOX 2628
HOUSTON TX 77252-2628
Billing & Service 1-800-427-7142
Monday-Friday Call 7 a.m. - 7 p.m.
CenterPointEnergy.com

To report gas leaks, carbon monoxide and other gas emergencies, please call 1-888-876-5786. We appreciate your understanding that billing inquiries cannot be answered on this line.

The customer charge includes the 2012 GRIP surcharge of \$2.67.

693



A SAFETY MESSAGE FROM CENTERPOINT ENERGY

Do not use or store flammable products such as gasoline in the same room or area near the water heater or any other gas appliance.

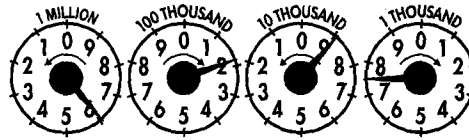
No use ni almacene productos inflamables tales como gasolina en la misma habitación o en áreas cercanas a un calentador de agua u otro tipo de aparato a gas.

UNDERSTANDING YOUR BILL

Payment arrangements. If you need to make payment arrangements on your gas bill, or enter into a delayed payment agreement, please call the local or toll free number listed on the front of your bill.

Additional services. Additional services also include the following: Automatic Bank Draft, Average Monthly Billing, third party billing, assistance to elderly and handicapped customers, notification of certified medical emergency and Energy Assistance Programs.

The following is an example of how to read a typical meter index:



Look at the four dials with their curved arrows. Read from right to left as follows:

1. Read the "thousand-foot" dial as 7, the last number that the pointer passed. Note that the curved arrow on the dial shows a clockwise movement of the pointer.
2. Read the next dial, the "10-thousand" dial. The curved arrow on the dial above shows a counterclockwise direction. The pointer is near the 9, but to be sure whether to read it as that number or the lower number 8, the previously mentioned "Same or Lower Number Rule" must be applied. Since the pointer in the "thousand-foot" dial to the right is nearer the 8 and the pointer has not reached the 0, the "10-thousand" dial should be read as 8.
3. Read the "100-thousand" dial, it seems to point to 2. Double-check by using the rule above. Since the pointer of the "10-thousand" dial is between 8 and 9, take the lower reading number, 1, for the "100-thousand" dial.
4. Read the left-most dial, the "million-foot" dial. The pointer is near the 6. Using the "Same or Lower Number Rule," we find the pointer on the dial to the right is between 1 and 2, so we read the "million-foot" dial exactly as the number it is on or near, 6.

The entire meter reading is 6187.

ONLINE BILLING.

Pay at CenterPointEnergy.com.
Go to your service area and select Online Billing to view and pay your monthly bill online.

MOVING? Please call us at the number on the front of this bill at least two weeks before you move, or let us know online at CenterPointEnergy.com. We will take gas service out of your name at your old address and make sure you have gas service at your new address when you need it. Thank you.

Keep this part of your bill.

Customer name COUNTY BARN PRECINCT 3
 Account number 2904139-9
 Date mailed 12/26/2012
 Date due **DEC 31 2012** 01/10/2013
 Total amount due **\$ 103.33**

QUESTIONS OR COMMENTS?

CenterPoint Energy
 PO BOX 2628
 HOUSTON TX 77252-2628
 Billing & Service 1-800-427-7142
 Monday-Friday Call 7 a.m. - 7 p.m.
 CenterPointEnergy.com

ACCT SUMMARY

Previous balance \$74.81
 Payment **Registered** 0.00
 Balance forward **\$ 74.81**
 Current billing **28.52**
 Total amount due **JAN 07 2013** ~~\$103.33~~

SERVICE ADDRESS

25000 State Highway 35 S
 Palacios TX 77465-1920 Matagorda Co Treasurer

YOUR GAS USAGE

33 Day billing period 11/16/2012 to 12/19/2012 Meter # 3788900514679
 Current reading 12/19/2012 4709
 Previous reading 11/16/2012 4703
 Metered Usage 1 CCF = 100 cubic feet of gas 6

YOUR BILL IN DETAIL

GSS-2085-GRIP 2012
 Customer charge \$22.67
 Base amount 6 CCF @ \$0.10670/CCF 0.64
 Gas cost adjustment 6 CCF @ \$0.53833/CCF 3.23
 Rate case surcharge 0.30
 State sales tax 6.25% 1.68
 Total current charges **\$28.52**

IMPORTANT NOTICE - TEXAS CUSTOMERS

The bill for your natural gas service is seriously past due. Please note that your regular bill also serves as a "Disconnect Notice" and should receive your immediate attention.

If your payment is not received in our office by the specified date for the past due balance, a collection charge may be made or your service may be disconnected without further notice.

If service is disconnected, you must pay your bill in full in addition to a reconnect charge. Your deposit requirement will be re-evaluated and may be increased if necessary to cover payment for future service.

If you or any permanent occupant of your premises is seriously ill, or may be made seriously ill by discontinuance of service, a limited extension of time may be obtained if requested before the disconnect date shown on the bill and supported by a hand written statement by a licensed physician.

Handwritten notes:
 2254
 7481
 Registered
 02
 28.52
 JAN 07 2013
 \$103.33

YOUR ACCOUNT IS PAST DUE
YOUR LAST DAY TO PAY THE PAST DUE AMOUNT OF \$74.81 IS ON 01/05/2013 TO AVOID YOUR SERVICE BEING DISCONNECTED.
THIS IS THE ONLY CUT-OFF NOTICE YOU WILL RECEIVE.

APPROVED
COUNTY AUDIT

A SAFETY MESSAGE FROM CENTERPOINT ENERGY

Do not use or store flammable products such as gasoline in the same room or area near the water heater or any other gas appliance.

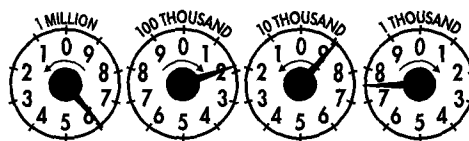
No use ni almacene productos inflamables tales como gasolina en la misma habitación o en áreas cercanas a un calentador de agua u otro tipo de aparato a gas.

UNDERSTANDING YOUR BILL

Payment arrangements. If you need to make payment arrangements on your gas bill, or enter into a delayed payment agreement, please call the local or toll free number listed on the front of your bill.

Additional services. Additional services also include the following: Automatic Bank Draft, Average Monthly Billing, third party billing, assistance to elderly and handicapped customers, notification of certified medical emergency and Energy Assistance Programs.

The following is an example of how to read a typical meter index:



Look at the four dials with their curved arrows. Read from right to left as follows:

1. Read the "thousand-foot" dial as 7, the last number that the pointer passed. Note that the curved arrow on the dial shows a clockwise movement of the pointer.
2. Read the next dial, the "10-thousand" dial. The curved arrow on the dial above shows a counterclockwise direction. The pointer is near the 9, but to be sure whether to read it as that number or the lower number 8, the previously mentioned "Same or Lower Number Rule" must be applied. Since the pointer in the "thousand-foot" dial to the right is nearer the 8 and the pointer has not reached the 0, the "10-thousand" dial should be read as 8.
3. Read the "100-thousand" dial, it seems to point to 2. Double-check by using the rule above. Since the pointer of the "10-thousand" dial is between 8 and 9, take the lower reading number, 1, for the "100-thousand" dial.
4. Read the left-most dial, the "million-foot" dial. The pointer is near the 6. Using the "Same or Lower Number Rule," we find the pointer on the dial to the right is between 1 and 2, so we read the "million-foot" dial exactly as the number it is on or near, 6.

The entire meter reading is 6187.

Keep this part of your bill.

Customer name	COUNTY BARN PRECINCT 3
Account number	2904139-9
Date mailed	12/26/2012
Date due	01/10/2013
Total amount due	\$ 103.33

QUESTIONS OR COMMENTS?

The address, telephone number, and office hours of your local CenterPoint Energy office are shown in the upper left hand corner of your bill.

If you have already paid the amount noted as past due, please disregard this notice.

AVISO DE DESCONEXIÓN

AVISO IMPORTANTE - CLIENTES DE TEXAS

La cuenta de tu servicio de gas natural está seriamente vencida. Por favor ten en cuenta que tu cuenta regular también sirve como un "Aviso de Desconexión" y es importante que lo atiendas de inmediato.

Si tu pago no es recibido en nuestra oficina en la fecha indicada para el saldo vencido, se podrá hacer un cargo por cobranza o tu servicio podrá ser desconectado sin nuevo aviso.

Si el servicio es desconectado será necesario que pagues el total de la cuenta, además de un cargo por reconexión. Tus requisitos de depósito serán re-evaluados y éste podrá ser aumentado si es necesario para cubrir el pago por servicio futuro.

Si tú o cualquier ocupante permanente del inmueble está gravemente enfermo o puede ponerse gravemente enfermo por la suspensión del servicio, se podrá obtener una prórroga limitada si ésta es solicitada antes de la fecha de desconexión que aparece en la cuenta, y es respaldada por un informe escrito a mano proveniente de un médico autorizado.

La dirección, el número de teléfono y horas de oficina de tu oficina local de CenterPoint Energy aparecen en el ángulo superior izquierdo de tu cuenta.

Si ya pagaste la cantidad indicada como vencida, por favor haz caso omiso de este aviso.

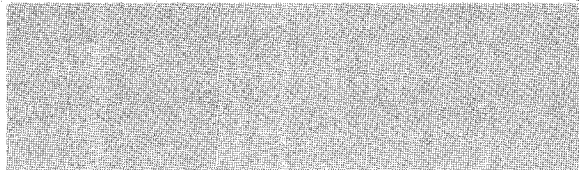
**EL PAGO DE TU
CUENTA ESTÁ
VENCIDO**

**EL ÚLTIMO DÍA PARA
PAGAR TU MONTO
VENCIDO DE \$74.81
ES EL 01/05/2013 PARA
EVITAR QUE TU
SERVICIO SEA
DESCONECTADO.**

**ÉSTE ES EL
ÚNICO AVISO
DE CORTE
QUE
RECIBIRÁS.**

647

Page 2 of 3



A SAFETY MESSAGE FROM CENTERPOINT ENERGY

Do not use or store flammable products such as gasoline in the same room or area near the water heater or any other gas appliance.

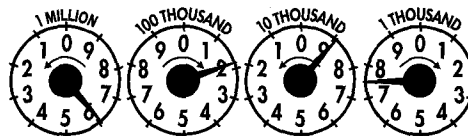
No use ni almacene productos inflamables tales como gasolina en la misma habitación o en áreas cercanas a un calentador de agua u otro tipo de aparato a gas.

UNDERSTANDING YOUR BILL

Payment arrangements. If you need to make payment arrangements on your gas bill, or enter into a delayed payment agreement, please call the local or toll free number listed on the front of your bill.

Additional services. Additional services also include the following: Automatic Bank Draft, Average Monthly Billing, third party billing, assistance to elderly and handicapped customers, notification of certified medical emergency and Energy Assistance Programs.

The following is an example of how to read a typical meter index:



Look at the four dials with their curved arrows. Read from right to left as follows:

1. Read the "thousand-foot" dial as 7, the last number that the pointer passed. Note that the curved arrow on the dial shows a clockwise movement of the pointer.
2. Read the next dial, the "10-thousand" dial. The curved arrow on the dial above shows a counterclockwise direction. The pointer is near the 9, but to be sure whether to read it as that number or the lower number 8, the previously mentioned "Same or Lower Number Rule" must be applied. Since the pointer in the "thousand-foot" dial to the right is nearer the 8 and the pointer has not reached the 0, the "10-thousand" dial should be read as 8.
3. Read the "100-thousand" dial, it seems to point to 2. Double-check by using the rule above. Since the pointer of the "10-thousand" dial is between 8 and 9, take the lower reading number, 1, for the "100-thousand" dial.
4. Read the left-most dial, the "million-foot" dial. The pointer is near the 6. Using the "Same or Lower Number Rule," we find the pointer on the dial to the right is between 1 and 2, so we read the "million-foot" dial exactly as the number it is on or near, 6.

The entire meter reading is 6187.

ONLINE BILLING.

Pay at CenterPointEnergy.com.
Go to your service area and select Online Billing to view and pay your monthly bill online.

MOVING? Please call us at the number on the front of this bill at least two weeks before you move, or let us know online at CenterPointEnergy.com. We will take gas service out of your name at your old address and make sure you have gas service at your new address when you need it. Thank you.

Keep this part of your bill.

Customer name	COUNTY BARN PRECINCT 3
Account number	2904139-9
Date mailed	12/26/2012
Date due	01/10/2013
Total amount due	\$ 103.33

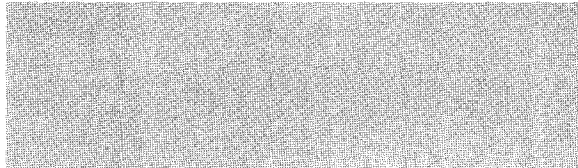
QUESTIONS OR COMMENTS?

CenterPoint Energy
PO BOX 2628
HOUSTON TX 77252-2628
Billing & Service 1-800-427-7142
Monday-Friday Call 7 a.m. - 7 p.m.
CenterPointEnergy.com

To report gas leaks, carbon monoxide and other gas emergencies, please call 1-888-876-5786. We appreciate your understanding that billing inquiries cannot be answered on this line.

The customer charge includes the 2012 GRIP surcharge of \$2.67.

647



A SAFETY MESSAGE FROM CENTERPOINT ENERGY

Do not use or store flammable products such as gasoline in the same room or area near the water heater or any other gas appliance.

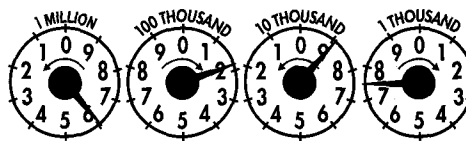
No use ni almacene productos inflamables tales como gasolina en la misma habitación o en áreas cercanas a un calentador de agua u otro tipo de aparato a gas.

UNDERSTANDING YOUR BILL

Payment arrangements. If you need to make payment arrangements on your gas bill, or enter into a delayed payment agreement, please call the local or toll free number listed on the front of your bill.

Additional services. Additional services also include the following: Automatic Bank Draft, Average Monthly Billing, third party billing, assistance to elderly and handicapped customers, notification of certified medical emergency and Energy Assistance Programs.

The following is an example of how to read a typical meter index:



Look at the four dials with their curved arrows. Read from right to left as follows:

1. Read the "thousand-foot" dial as 7, the last number that the pointer passed. Note that the curved arrow on the dial shows a clockwise movement of the pointer.
2. Read the next dial, the "10-thousand" dial. The curved arrow on the dial above shows a counterclockwise direction. The pointer is near the 9, but to be sure whether to read it as that number or the lower number 8, the previously mentioned "Same or Lower Number Rule" must be applied. Since the pointer in the "thousand-foot" dial to the right is nearer the 8 and the pointer has not reached the 0, the "10-thousand" dial should be read as 8.
3. Read the "100-thousand" dial, it seems to point to 2. Double-check by using the rule above. Since the pointer of the "10-thousand" dial is between 8 and 9, take the lower reading number, 1, for the "100-thousand" dial.
4. Read the left-most dial, the "million-foot" dial. The pointer is near the 6. Using the "Same or Lower Number Rule," we find the pointer on the dial to the right is between 1 and 2, so we read the "million-foot" dial exactly as the number it is on or near, 6.

The entire meter reading is 6187.

ONLINE BILLING.

Pay at CenterPointEnergy.com.
Go to your service area and select Online Billing to view and pay your monthly bill online.

MOVING? Please call us at the number on the front of this bill at least two weeks before you move, or let us know online at CenterPointEnergy.com. We will take gas service out of your name at your old address and make sure you have gas service at your new address when you need it. Thank you.

P.O. Box 1189
 Edna, TX 77957-1189
 Edna (361) 771-4400
 Bay City (979) 245-3029



Your Touchstone Energy Cooperative

112550

2012 9712 2790

Office Hours:
 Monday - Friday
 8:00 a.m. - 5:00 p.m.

ACCOUNT #	ACCOUNT NAME	RATE	PCRF	BILL TYPE	SERVICE ADDRESS	TELEPHONE#
13415001	MATAGORDA CO PREC #2	41	0.070000	0	457-TIN BARN	(000) 000-0000

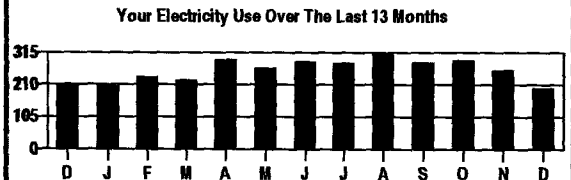
SERVICE PERIOD		NO. DAYS	READ TYPE	METER READING		METER NUMBER	MULT	KILOWATT USAGE	CHARGES
FROM	TO			PREVIOUS	PRESENT				
11/18/12	12/18/12	30	2	16587	16785	92807574	1	198	38.81
1 100W-HPS								42	10.50
THANK YOU FOR YOUR PAYMENT 12/14/12									-54.73
PREVIOUS AMOUNT DUE									54.73
TOTAL AMOUNT DUE									49.31

DEC 31 2012

APPROVED
 COUNTY AUDITOR

10-613-44

COMPARISONS	DAYS SERVICE	KWH USED	AVG. KWH/DAY	COST PER DAY	TOTAL NOW DUE	
CURRENT BILLING PERIOD	30	198	6	1.29	49.31	
PREVIOUS BILLING PERIOD	32	255	7	1.38	CURRENT BILL PAST DUE AFTER	01-15-13
SAME PERIOD LAST YEAR	30	209	6	1.32	AFTER DUE DATE PAY \$51.77	



MERRY CHRISTMAS
 AND
 HAPPY NEW YEAR!!!

VISIT OUR WEBSITE AT: www.jecoc.com Registered
 PLEASE CALL ANY JEC OFFICE TO OBTAIN PASSWORD.

Bill Type	Read Type
0	0
1	1
2	2
3	3
4	4
5	5
6	
7	
8	
9	

JAN 07 2013

Matagorda Co Treasurer

Keep This Portion for your Records - Return Bottom Portion with Payment
 PLEASE DETACH AND RETURN THIS PORTION WITH PAYMENT

P.O. Box 1189
 Edna, TX 77957-1189
 Edna (361) 771-4400
 Bay City (979) 245-3029



Your Touchstone Energy Cooperative

370

112551

2012 9713 2790

Office Hours:
 Monday - Friday
 8:00 a.m. - 5:00 p.m.

ACCOUNT #	ACCOUNT NAME	RATE	PCRF	BILL TYPE	SERVICE ADDRESS	TELEPHONE#				
13415002	MATAGORDA CO PREC #2	41	0.070000	0	S/LTS ONLY	(000) 000-0000				
SERVICE PERIOD		NO. DAYS	READ TYPE	METER READING		METER NUMBER	MULT	KILOWATT USAGE	CHARGES	
FROM	TO			PREVIOUS	PRESENT					
11/18/12	12/18/12	30	0			0			0.00	
4 100W-HPS								168	42.00	
THANK YOU FOR YOUR PAYMENT									12/14/12	-42.00
PREVIOUS AMOUNT DUE										42.00
TOTAL AMOUNT DUE										42.00
Registered										
JAN 07 2013										
Matagorda Co Treasurer										
DEC 31 2012										
APPROVED COUNTY AUDITOR										
10-613-441										
COMPARISONS	DAYS SERVICE	KWH USED	AVG. KWH/DAY	COST PER DAY	TOTAL NOW DUE			42.00		
CURRENT BILLING PERIOD	30	0	0	0	CURRENT BILL	01-15-13	BILL IS DUE UPON RECEIPT			
PREVIOUS BILLING PERIOD	31	0	0	0	PAST DUE AFTER					
SAME PERIOD LAST YEAR	30	0	0	0	AFTER DUE DATE PAY			\$44.10		
Your Electricity Use Over The Last 13 Months					<p style="text-align: center;">MERRY CHRISTMAS AND HAPPY NEW YEAR!!!</p> <p style="text-align: center;">VISIT OUR WEBSITE AT: www.jecec.com</p> <p style="text-align: center;">PLEASE CALL ANY JEC OFFICE TO OBTAIN PASSWORD.</p>					

- Bill Type**
- 0 NORMAL
 - 1 ESTIMATED
 - 2 MINIMUM ESTIMATED
 - 3 MINIMUM
 - 4 FINAL
 - 5 PRORATED
 - 6 PRORATED MINIMUM
 - 7 BUDGET BILL
 - 8 WEATHERIZATION/CONTRACT
 - 9 WAITING TO BE BILLED

- Read Type**
- 0 COMPUTER ESTIMATED
 - 1 CONSUMER READ
 - 2 COOP READ
 - 3 CHARGEABLE READ
 - 4 COOP READ - FIELD
 - 5 NEW CONNECT

Keep This Portion for your Records - Return Bottom Portion with Payment
 PLEASE DETACH AND RETURN THIS PORTION WITH PAYMENT

P.O. Box 1189
 Edna, TX 77957-1189
 Edna (361) 771-4400
 Bay City (979) 245-3029



Your Touchstone Energy Cooperative

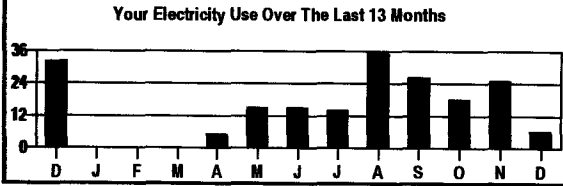
370

2012 9714 2790

Office Hours:
 Monday - Friday
 8:00 a.m. - 5:00 p.m.

112552

ACCOUNT #	ACCOUNT NAME	RATE	PCRF	BILL TYPE	SERVICE ADDRESS	TELEPHONE#			
13415003	MATAGORDA CO PREC #2	41	0.070000	0	RESTROOM AT PARK	(000) 000-0000			
SERVICE PERIOD		NO. DAYS	READ TYPE	METER READING		METER NUMBER	MULT	KILOWATT USAGE	CHARGES
FROM	TO			PREVIOUS	PRESENT				
11/18/12	12/17/12	29	2	5283	5289	14110621	1	6	20.57
THANK YOU FOR YOUR PAYMENT 12/14/12									-22.38
PREVIOUS AMOUNT DUE									22.38
TOTAL AMOUNT DUE Registered									20.57
JAN 07 2013									
DEC 31 2012									
Matagorda Co Treasurer									
10-662-441									
APPROVED COUNTY AUDITOR									
TOTAL NOW DUE									20.57
COMPARISONS	DAYS SERVICE	KWH USED	AVG. KWH/DAY	COST PER DAY	CURRENT BILL PAST DUE AFTER		01-15-13	BILL IS DUE UPON RECEIPT	
CURRENT BILLING PERIOD	29	6	0	0.70	AFTER DUE DATE PAY				
PREVIOUS BILLING PERIOD	31	25	0	0.72					
SAME PERIOD LAST YEAR	30	32	1	0.76			AFTER DUE DATE PAY \$21.59		



MERRY CHRISTMAS AND HAPPY NEW YEAR!!!

VISIT OUR WEBSITE AT: www.jecec.com

PLEASE CALL ANY JEC OFFICE TO OBTAIN PASSWORD.

- Bill Type
- 0 NORMAL
 - 1 ESTIMATED
 - 2 MINIMUM ESTIMATED
 - 3 MINIMUM
 - 4 FINAL
 - 5 PRORATED
 - 6 PRORATED MINIMUM
 - 7 BUDGET BILL
 - 8 WEATHERIZATION/CONTRACT
 - 9 WAITING TO BE BILLED

- Read Type
- 0 COMPUTER ESTIMATED
 - 1 CONSUMER READ
 - 2 COOP READ
 - 3 CHARGEABLE READ
 - 4 COOP READ - FIELD
 - 5 NEW CONNECT

Keep This Portion for your Records - Return Bottom Portion with Payment
 PLEASE DETACH AND RETURN THIS PORTION WITH PAYMENT

P.O. Box 1189
 Edna, TX 77957-1189
 Edna (361) 771-4400
 Bay City (979) 245-3029



Your Touchstone Energy Cooperative

370

2012 9715
2790

Office Hours:
 Monday - Friday
 8:00 a.m. - 5:00 p.m.

112553

ACCOUNT #	ACCOUNT NAME	RATE	PCRF	BILL TYPE	SERVICE ADDRESS	TELEPHONE#
13415004	MATAGORDA CO PREC #2	41	0.070000	0	112 C/R 230 PUBLIC RESTROOM	(979) 244-7609

SERVICE PERIOD		NO. DAYS	READ TYPE	METER READING		METER NUMBER	MULT	KILOWATT USAGE	CHARGES
FROM	TO			PREVIOUS	PRESENT				
11/18/12	12/18/12	30	2	20214	20302	35298441	1	88	28.36

THANK YOU FOR YOUR PAYMENT 12/14/12
 PREVIOUS AMOUNT DUE Registered 28.55
 TOTAL AMOUNT DUE 28.36

JAN 07 2013

Matagorda Co Treasurer

DEC 31 2012

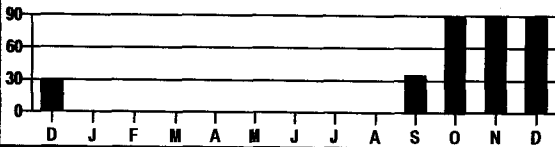
APPROVED
 COUNTY AUDITOR

10-662-4576

COMPARISONS	DAYS SERVICE	KWH USED	AVG. KWH/DAY	COST PER DAY	TOTAL NOW DUE
CURRENT BILLING PERIOD	30	88	2	0.94	28.36
PREVIOUS BILLING PERIOD	31	90	2	0.92	
SAME PERIOD LAST YEAR	30	29	0	0.75	

CURRENT BILL PAST DUE AFTER 01-15-13 BILL IS DUE UPON RECEIPT
 AFTER DUE DATE PAY \$29.77

Your Electricity Use Over The Last 13 Months



MERRY CHRISTMAS
 AND
 HAPPY NEW YEAR!!!

VISIT OUR WEBSITE AT: www.jecoc.com
 PLEASE CALL ANY JEC OFFICE TO OBTAIN PASSWORD.

- | | |
|---------------------------|----------------------|
| Bill Type | Read Type |
| 0 NORMAL | 0 COMPUTER ESTIMATED |
| 1 ESTIMATED | 1 CONSUMER READ |
| 2 MINIMUM ESTIMATED | 2 COOP READ |
| 3 MINIMUM | 3 CHARGEABLE READ |
| 4 FINAL | 4 COOP READ - FIELD |
| 5 PRORATED | 5 NEW CONNECT |
| 6 PRORATED MINIMUM | |
| 7 BUDGET BILL | |
| 8 WEATHERIZATION/CONTRACT | |
| 9 WAITING TO BE BILLED | |

Keep This Portion for your Records - Return Bottom Portion with Payment
 PLEASE DETACH AND RETURN THIS PORTION WITH PAYMENT

P.O. Box 1189
 Edna, TX 77957-1189
 Edna (361) 771-4400
 Bay City (979) 245-3029



Your Touchstone Energy Cooperative

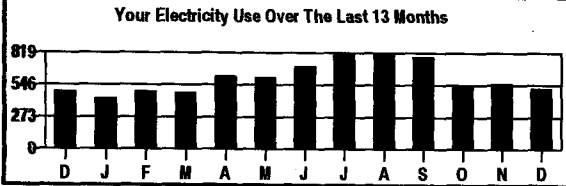
370

112554

2012 9379 2792

Office Hours:
 Monday - Friday
 8:00 a.m. - 5:00 p.m.

ACCOUNT #	ACCOUNT NAME	RATE	PCRF	BILL TYPE	SERVICE ADDRESS	TELEPHONE#			
13416001	MATAGORDA COUNTY PCT 4	41	0.070000	0	COUNTY COMM.PREC.BARN HWY 35	(000) 000-0000			
SERVICE PERIOD		METER READING		METER NUMBER	MULT	KILOWATT USAGE	CHARGES		
FROM	TO	NO. DAYS	READ TYPE					PREVIOUS	PRESENT
11/17/12	12/18/12	31	2	16851	17365	95575726	1	514	68.83
2 100W-HPS								84	21.00
THANK YOU FOR YOUR PAYMENT								12/14/12	-93.92
PREVIOUS AMOUNT DUE									93.92
TOTAL AMOUNT DUE									89.83
DEC 3 1 2012									
Registered									
JAN 07 2013									
Matagorda Co Treasurer									
Code 615-441 K.H. 2012									
APPROVED COUNTY AUDITOR									
COMPARISONS	DAYS SERVICE	KWH USED	AVG. KWH/DAY	COST PER DAY	TOTAL NOW DUE			89.83	
CURRENT BILLING PERIOD	31	514	16	2.22	CURRENT BILL	01-15-13	BILL IS DUE UPON RECEIPT	89.83 ✓	
PREVIOUS BILLING PERIOD	31	557	17	2.35	PAST DUE AFTER				
SAME PERIOD LAST YEAR	30	488	16	2.21	AFTER DUE DATE PAY			\$94.32	



MERRY CHRISTMAS AND HAPPY NEW YEAR!!!

VISIT OUR WEBSITE AT: www.jecec.com
 PLEASE CALL ANY JEC OFFICE TO OBTAIN PASSWORD.

- | Bill Type | Read Type |
|---------------------------|----------------------|
| 0 NORMAL | 0 COMPUTER ESTIMATED |
| 1 ESTIMATED | 1 CONSUMER READ |
| 2 MINIMUM ESTIMATED | 2 COOP READ |
| 3 MINIMUM | 3 CHARGEABLE READ |
| 4 FINAL | 4 COOP READ - FIELD |
| 5 PRORATED | 5 NEW CONNECT |
| 6 PRORATED MINIMUM | |
| 7 BUDGET BILL | |
| 8 WEATHERIZATION/CONTRACT | |
| 9 WAITING TO BE BILLED | |

Keep This Portion for your Records - Return Bottom Portion with Payment
 PLEASE DETACH AND RETURN THIS PORTION WITH PAYMENT

P.O. Box 1189
 Edna, TX 77957-1189
 Edna (361) 771-4400
 Bay City (979) 245-3029



Your Touchstone Energy® Cooperative

370

112555

2012 9380 2792

Office Hours:
 Monday - Friday
 8:00 a.m. - 5:00 p.m.

ACCOUNT #	ACCOUNT NAME	RATE	PCRF	BILL TYPE	SERVICE ADDRESS	TELEPHONE#			
13416002	MATAGORDA COUNTY PCT 4	41	0.070000	0	STH HWY 35 BARN	(000) 000-0000			
SERVICE PERIOD		METER READING		METER NUMBER	MULT	KILOWATT USAGE	CHARGES		
FROM	TO	NO. DAYS	READ TYPE	PREVIOUS	PRESENT				
11/17/12	12/18/12	31	2	98671	3	80750682	1	1332	146.54

THANK YOU FOR YOUR PAYMENT 12/14/12 -158.89
 PREVIOUS AMOUNT DUE 158.89
 TOTAL AMOUNT DUE 146.54

Registered

DEC 31 2012

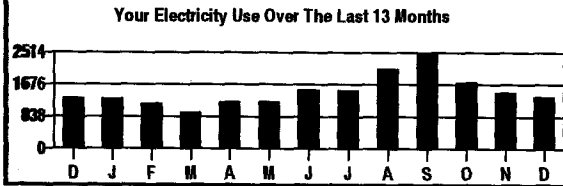
JAN 07 2013

Matagorda Co Treasurer

D.W.
 Code 615-441 K.H. 2012

APPROVED COUNTY AUDITOR

COMPARISONS	DAYS SERVICE	KWH USED	AVG. KWH/DAY	COST PER DAY	TOTAL NOW DUE
CURRENT BILLING PERIOD	31	1332	42	4.72	146.54
PREVIOUS BILLING PERIOD	31	1462	47	5.12	
SAME PERIOD LAST YEAR	30	1311	43	4.81	
					CURRENT BILL PAST DUE AFTER 01-15-13
					BILL IS DUE UPON RECEIPT
					AFTER DUE DATE PAY \$153.86



MERRY CHRISTMAS AND HAPPY NEW YEAR!!!

VISIT OUR WEBSITE AT: www.jecec.com
 PLEASE CALL ANY JEC OFFICE TO OBTAIN PASSWORD.

Bill Type	Read Type
0 NORMAL	0 COMPUTER ESTIMATED
1 ESTIMATED	1 CONSUMER READ
2 MINIMUM ESTIMATED	2 COOP READ
3 MINIMUM	3 CHARGEABLE READ
4 FINAL	4 COOP READ - FIELD
5 PRORATED	5 NEW CONNECT
6 PRORATED MINIMUM	
7 BUDGET BILL	
8 WEATHERIZATION/CONTRACT	
9 WAITING TO BE BILLED	

Keep This Portion for your Records - Return Bottom Portion with Payment
 PLEASE DETACH AND RETURN THIS PORTION WITH PAYMENT

2012

m



**MATAGORDA WASTE DISPOSAL
& WATER SUPPLY CORPORATION**
P.O. BOX 196
MATAGORDA, TEXAS 77457-0196
(979) 863-7261

SERVICE	METER READING		USED	CHARGES
	PRESENT	PREVIOUS		
Water	357940	357040	900	26.00

10-462-441 112556

**APPROVED
COUNTY AUDITOR**

Office Hrs. Mon. thru Fri. 8:30 AM-1:00 PM

Service From 11/16/2012 TO 12/16/2012 ACCOUNT # 411 12/26/12

METER READ			CLASS	TOTAL DUE UPON RECEIPT	LATE CHARGE AFTER DUE DATE	PAST DUE AMOUNT
MONTH	DAY					
12	16	3		26.00	0.00	26.00

This bill is due by the 10th of the month following billing. Service will be disconnected on the 10th day after the delinquent notice is mailed and a \$20.00 reconnect fee will be charged. Service will be restored after all past due charges are paid.

DEC 31 2012

Registered

JAN 07 2013

Matagorda Co Treasurer