



2254 ✓

CUSTOMER COUNTY BARN PRECINCT 3
DEC 01 2021

JW

ACCOUNT NUMBER 2904139-9 / 111821
DATE MAILED Nov 23, 2021

Page 1 of 4
DATE DUE Dec 08, 2021
AMOUNT DUE \$ 38.47

CenterPointEnergy.com

SERVICE ADDRESS 405 Commerce St, Palacios, TX 77465

Gas leak or emergency

Leave immediately, then call 888-876-5786, 24 hours a day

Customer service

800-427-7142 toll-free Monday - Friday, 7 am - 7 pm

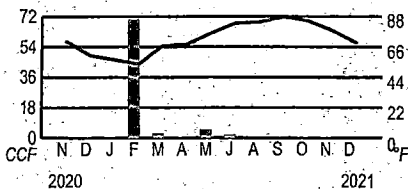
Call before you dig

Call 811 24 hours a day

Comments

PO Box 2628 Houston, TX 77252-2628

Your usage in a glance



Previous usage	Usage this month	Average daily temperature	
		1 year ago	This month
Total CCF used	0	1	0
Average daily gas use (CCF)	0.0	0.0	0.0
Average daily temperature	69	77	68
Days in billing period	29	29	29

To better understand your home energy usage and learn energy savings tips, visit CenterPointEnergy.com/myenergyanalyzer

To report gas leaks, carbon monoxide and other gas emergencies, please call 1-888-876-5786. We appreciate your understanding that billing inquiries cannot be answered on this line.

Pay your next bill without lifting a finger. To enroll in AutoPay, just sign and date the back of your bill stub and return to us with a check for your payment amount. It's that easy!

ACCOUNT SUMMARY

Previous gas amount due	\$ 39.42
Payment Nov 16, 2021	- 39.42
Current gas charges (Details on page 2)	+ 38.47
Total amount due	\$ 38.47

Thank you!

APPROVED COUNTY AUDITOR
DB KW

Paper bills are so yesterday! Go paperless today and save yourself some time and money. Visit CenterPointEnergy.com/Paperless.

Rates have been reduced due to a Tax Refund. For more information, please visit CenterPointEnergy.com/TXTaxReform.

RECEIVED
DEC 01 2021
BY: DB

0105 4410-614 AH

How to pay your bill

Online
Visit: CenterPointEnergy.com/paybill Pay immediately, schedule a payment or set up automatic monthly payments.

Phone
Call 800-427-7142 and make a payment using your checking or savings account, or by debit or credit card.

In person
To find a payment location, visit: CenterPointEnergy.com/paybill or call 800-427-7142.

Mail
Return the payment stub below, with your check or money order, using the return envelope.

Please keep this portion for your records

Please return this portion with your payment. Please do not include letters or notes.



ACCOUNT NUMBER 2904139-9

Enroll in AutoPay today. See form on the back of this stub.

DATE DUE	Dec 08, 2021
AMOUNT DUE	\$ 38.47

Write account number on check and make payable to CenterPoint Energy.

\$ 38.47

Please enter amount of your payment

00001563 01 AV 0.42 1

COUNTY BARN PRECINCT 3
25000 STATE HIGHWAY 35 S
PALACIOS, TX 77465-1920



CENTERPOINT ENERGY
PO BOX 4981
HOUSTON TX 77210-4981

0620342983165

008200000290413992000000038470000000384760

CUSTOMER
COUNTY BARN PRECINCT 3

ACCOUNT NUMBER
2904139-9

DATE DUE

Dec 08, 2021

SERVICE ADDRESS
405 Commerce St, Palacios, TX 77465

DATE MAILED
Nov 23, 2021

AMOUNT DUE

\$ 38.47

DEFINITIONS

CCF 1 CCF = 100 cubic feet of gas. This is how we measure your monthly usage.

Customer charge and base amount. Covers fixed costs for reading meters, issuing bills, maintaining facilities and gas lines, postage, etc. These costs occur even if you do not use gas during a billing period.

Gas Cost Adjustment (GCA) is the cost CenterPoint Energy pays for the gas it delivers to its customers.

Storage inventory charge allows the Company the opportunity to recover the regulated carrying cost of its investment in storage.

Reimbursement of local franchise fee is a fee paid to the city for the company's use of right-of-way in streets and alleys.

Reimbursement of state gross receipts tax is a tax imposed by the State of Texas on each utility company located in an incorporated city having a population of more than 1,000.

For a more detailed description of each of the terms used on your bill, please visit CenterPointEnergy.com/definitions or call Customer Support at 800-427-7142.

Current gas charges

Rate: GSS-2097-U-GRIP 2021@14.95 Pressure Base

Meter Number **Day Billing Period**
3828200587513 29

Billing Period	Current Reading	- Previous Reading	= Total	x	Combined pressure factor	Adjusted Usage
10/20/21 - 11/18/21	9443	9443 ✓	0		1.14020	0 CCF
Customer charge *						\$ 37.05
Tax refund						- 0.91
Reimbursement of local franchise fee						1.92
Reimbursement of State GRT						0.41
Total current charges						\$ 38.47 ✓

The customer charge includes the current GRIP surcharge of \$4.78.

Your account, managed your way

Sign up at CenterPointEnergy.com/myaccount

- **24/7 online account access.** View and/or pay your bill, view usage history, sign up for account services and much more.
- **Go paperless.** Receive an email when your bill is ready to view and pay. Get convenience, get rid of clutter.

- **Pay automatically.** Set up AutoPay by signing and returning the form below with your check payment. It's that easy!

- **Even out the highs and lows of your monthly bills.** Enroll in Average Monthly Billing and spread your natural gas costs throughout the year.

- **Get bill reminders.** Choose text or email, up to five days before your bill is due.

- **Other services.** Report a payment made at a payment location, set up a payment extension and much more. View options from your online account or visit CenterPointEnergy.com/selfservice if you'd prefer not to register.

- **Moving?** Please call us at 800-427-7142 at least two weeks before you move, or complete the forms at CenterPointEnergy.com/selfservice

Mail payments to CenterPoint Energy, PO Box 4981, Houston, TX 77210-4981

Enroll in AutoPay and your monthly payment will be automatically deducted from your bank account.

To enroll, sign and date this form and return with your check payment. Money orders do not qualify for enrollment. Your next bill will be automatically deducted from the account listed on your check. For more information and to enroll electronically, go to CenterPointEnergy.com/autopay.

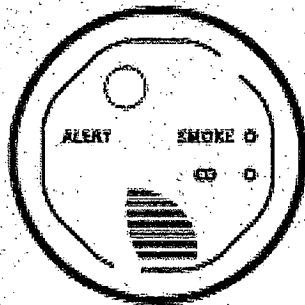
I authorize CenterPoint Energy to automatically deduct from the checking account shown on my enclosed check all future payments for my CenterPoint Energy bills. I will notify CenterPoint Energy if I decide to cancel my use of AutoPay. CenterPoint Energy also has the right to discontinue my AutoPay enrollment. Once I enroll, I understand that any past due balances will be drafted from my account three days after my application is processed.

Account holder's signature

Date

Prevent carbon monoxide exposure

Get your natural gas heating system inspected, tuned up by a certified technician.



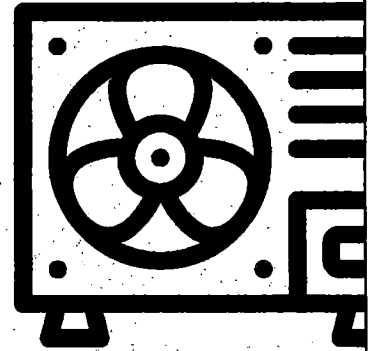
Annual inspection should include:

- Checking heat exchanger for cracks, rust.
- Examining burners to make sure they're producing a clear blue flame.
- Checking vents and pipes to make sure they're clear of debris, obstructions, gaps, leaks, rust.
- Replace batteries in CO monitor.

CenterPointEnergy.com/CarbonMonoxide

200543

Prep your AC unit for winter



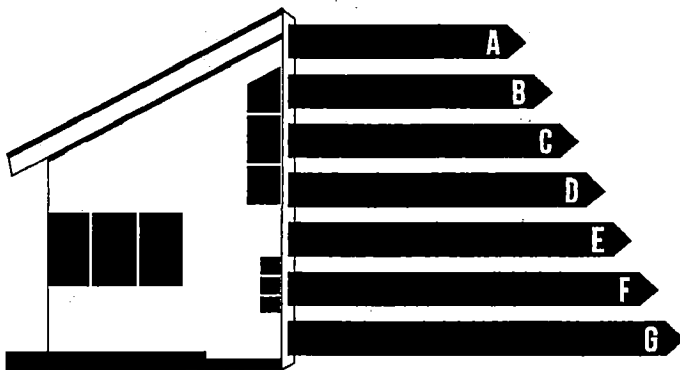
With fall and winter rolling in, protect your central AC unit that sits outside and braves the elements all year long with these quick and easy DIY steps:

- 1) Clean Up** Sweep any leaves, grass clippings or dirt from around the unit. Then take a hose and rinse off any bugs, dirt or nests that have accumulated as well.
- 2) Take a Listen** Take a moment and listen to your AC unit while it is running to hear any noises. Hear any banging, grinding, clunking or buzzing? You may need repairs. Get these fixed now.
- 3) Insulate** Nothing worse than a burst pipe. Insulating your pipes is vital during the winter months.

Need help getting started? Visit

CenterPointEnergy.com/DIYEfficiency

203133



My Energy Analyzer

Our energy cost and emissions calculator shows you ways to save by making your house more efficient.

CenterPointEnergy.com/MyAnalyzer

203306

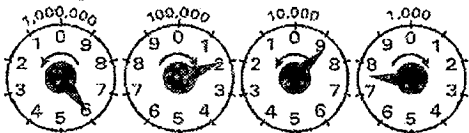
November, 2021

A safety message from CenterPoint Energy

If you smell natural gas, leave immediately. Call our Gas Leak Hotline at 800-296-9815. Do not use or store flammable products such as gasoline in the same room or area near the water heater or any other gas appliance.

Si percibes un olor a gas natural, sal inmediatamente. Llama a nuestra línea telefónica para fugas de gas a uno de los números de teléfono que aparecen arriba. No use ni almacene productos inflamables tales como gasolina en la misma habitación o en áreas cercanas a un calentador de agua u otro tipo de aparato a gas.

How to read your meter



The following is an example of how to read a typical meter index.

Look at the four dials with their curved arrows. Read from right to left as follows:

1. Read the "thousand-foot" dial as 7, the last number that the pointer passed. Note that the curved arrow on the dial shows a clockwise movement of the pointer.
2. Read the next dial, the "100-thousand" dial. The curved arrow on the dial above shows a

counterclockwise direction. The pointer is near the 9, but to be sure whether to read it as that number or the lower number 8, the previously mentioned "same or lower number rule" must be applied. Since the pointer in the "thousand-foot" dial to the right is nearer the 8 and the pointer has not reached the 0, the "100-thousand" dial should be read as 8.

3. Read the "100-thousand" dial, it seems to point to 2. Double-check by using the rule above. Since the pointer of the "100-thousand" dial is between 8 and 9, take the lower reading number, 1, for the "100-thousand" dial.

4. Read the left-most dial, the "million-foot" dial. The pointer is near the 6. Using the "same or lower number rule", we find the pointer on the dial to the right is between 1 and 2, so we read the "million-foot" dial exactly as the number it is on or near, 6.

The entire meter reading is 6187.



CenterPointEnergy.com

2254 ✓

CUSTOMER
COUNTY BARN PRECINCT 3

SERVICE ADDRESS
25000 State Highway 35 S, Palacios, TX 77465-1920

DEC 01 2021

JW

ACCOUNT NUMBER

6401111506-6/11/21

DATE MAILED

Nov 23, 2021

DATE DUE

Page 1 of 4

Dec 08, 2021

AMOUNT DUE

\$ 36.14

Gas leak or emergency

Leave immediately, then call
888-876-5786, 24 hours a day

Customer service

800-427-7142 toll-free
Monday - Friday, 7 am - 7 pm

Call before you dig

Call 811
24 hours a day

Comments

PO Box 2628
Houston, TX 77252-2628

Rates have been reduced due to a Tax Refund. For more information, please visit CenterPointEnergy.com/TXTaxReform.

To report gas leaks, carbon monoxide and other gas emergencies, please call 1-888-876-5786. We appreciate your understanding that billing inquiries cannot be answered on this line.

Pay your next bill without lifting a finger. To enroll in AutoPay, just sign and date the back of your bill stub and return to us with a check for your payment amount. It's that easy!

ACCOUNT SUMMARY

Previous gas amount due	\$ 36.14
Payment Nov 16, 2021	- 36.14
Current gas charges (Details on page 2)	+ 36.14
Total amount due	\$ 36.14

APPROVED
COUNTY AUDITOR

JB KW

Paper bills are so yesterday! Go paperless today and save yourself some time and money. Visit: CenterPointEnergy.com/Paperless.

RECEIVED
DEC 01 2021

01254410614
AHT

BY: JB

How to pay your bill

Online

Visit: CenterPointEnergy.com/paybill Pay immediately, schedule a payment or set up automatic monthly payments.

Phone

Call 800-427-7142 and make a payment using your checking or savings account, or by debit or credit card.

In person

To find a payment location, visit: CenterPointEnergy.com/paybill or call 800-427-7142.

Mail

Return the payment stub below, with your check or money order, using the return envelope.

Please keep this portion for your records

Please return this portion with your payment. Please do not include letters or notes.

ACCOUNT NUMBER 6401111506-6



Enroll in AutoPay today. See form on the back of this stub.

DATE DUE Dec 08, 2021
AMOUNT DUE \$ 36.14

Write account number on check and make payable to CenterPoint Energy.

\$ 36.14

Please enter amount of your payment

00001562 01 AV 0.42 1

COUNTY BARN PRECINCT 3
25000 STATE HIGHWAY 35 S
PALACIOS, TX 77465-1920



CENTERPOINT ENERGY
PO BOX 4981
HOUSTON TX 77210-4981

0920174913979

0082006401111506670000003614000000361400

CUSTOMER
COUNTY BARN PRECINCT 3

ACCOUNT NUMBER

6401111506-6

DATE DUE

Dec 08, 2021

DATE MAILED

Nov 23, 2021

AMOUNT DUE

\$ 36.14

SERVICE ADDRESS

25000 State Highway 35 S, Palacios, TX 77465-1920

DEFINITIONS

CCF 1 CCF = 100 cubic feet of gas. This is how we measure your monthly usage.

Customer charge and base amount. Covers fixed costs for reading meters, issuing bills, maintaining facilities and gas lines, postage, etc. These costs occur even if you do not use gas during a billing period.

Gas Cost Adjustment (GCA) is the cost CenterPoint Energy pays for the gas it delivers to its customers.

Storage inventory charge allows the Company the opportunity to recover the regulated carrying cost of its investment in storage.

Reimbursement of local franchise fee is a fee paid to the city for the company's use of right-of-way in streets and alleys.

Reimbursement of state gross receipts tax is a tax imposed by the State of Texas on each utility company located in an incorporated city having a population of more than 1,000.

For a more detailed description of each of the terms used on your bill, please visit CenterPointEnergy.com/definitions or call Customer Support at 800-427-7142.

Current gas charges

Rate: GSS-2097-U-GRIP 2021@14.95 Pressure Base

Meter Number **Day Billing Period**

3731506736444 29

Billing Period	Current Reading	Previous Reading	=	Usage
10/20/21 - 11/18/21 ✓	550	550 ✓		0 CCF
Customer charge *				\$ 37.05
Tax refund				- 0.91
Total current charges				\$ 36.14

The customer charge includes the current GRIP surcharge of \$4.78.

Your account, managed your way

Sign up at CenterPointEnergy.com/myaccount

- **24/7 online account access.** View and/or pay your bill, view usage history, sign up for account services and much more.
- **Go paperless.** Receive an email when your bill is ready to view and pay. Get convenience, get rid of clutter.

- **Pay automatically.** Set up AutoPay by signing and returning the form below with your check payment. It's that easy!

- **Even out the highs and lows of your monthly bills.** Enroll in Average Monthly Billing and spread your natural gas costs throughout the year.

- **Get bill reminders.** Choose text or email, up to five days before your bill is due.

- **Other services.** Report a payment made at a payment location, set up a payment extension and much more. View options from your online account or visit CenterPointEnergy.com/selfservice if you'd prefer not to register.

- **Moving?** Please call us at 800-427-7142 at least two weeks before you move, or complete the forms at CenterPointEnergy.com/selfservice

Mail payments to CenterPoint Energy, PO Box 4981, Houston, TX 77210-4981

Enroll in AutoPay and your monthly payment will be automatically deducted from your bank account.

To enroll, sign and date this form and return with your check payment. Money orders do not qualify for enrollment. Your next bill will be automatically deducted from the account listed on your check. For more information and to enroll electronically, go to CenterPointEnergy.com/autopay.

I authorize CenterPoint Energy to automatically deduct from the checking account shown on my enclosed check all future payments for my CenterPoint Energy bills. I will notify CenterPoint Energy if I decide to cancel my use of AutoPay. CenterPoint Energy also has the right to discontinue my AutoPay enrollment. Once I enroll, I understand that any past due balances will be drafted from my account three days after my application is processed.

Account holder's signature

Date

Prevent carbon monoxide exposure

Get your natural gas heating system inspected, tuned up by a certified technician.



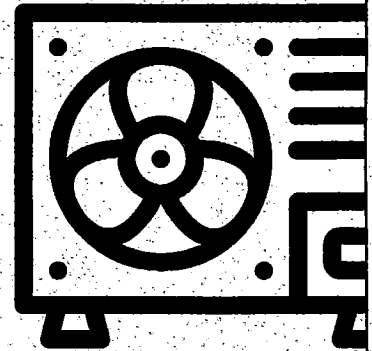
Annual inspection should include:

- Checking heat exchanger for cracks, rust.
- Examining burners to make sure they're producing a clear blue flame.
- Checking vents and pipes to make sure they're clear of debris, obstructions, gaps, leaks, rust.
- Replace batteries in CO monitor.

CenterPointEnergy.com/CarbonMonoxide

200543

Prep your AC unit for winter



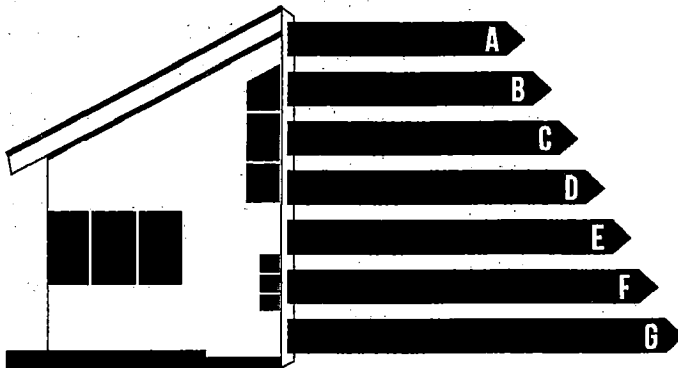
With fall and winter rolling in, protect your central AC unit that sits outside and braves the elements all year long with these quick and easy DIY steps:

- 1) Clean Up** Sweep any leaves, grass clippings or dirt from around the unit. Then take a hose and rinse off any bugs, dirt or nests that have accumulated as well.
- 2) Take a Listen** Take a moment and listen to your AC unit while it is running to hear any noises. Hear any banging, grinding, clunking or buzzing? You may need repairs. Get these fixed now.
- 3) Insulate** Nothing worse than a burst pipe. Insulating your pipes is vital during the winter months.

Need help getting started? Visit

CenterPointEnergy.com/DIYEfficiency

203133



My Energy Analyzer

Our energy cost and emissions calculator shows you ways to save by making your house more efficient.

CenterPointEnergy.com/MyAnalyzer

203306

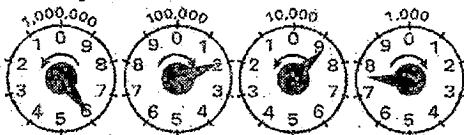
November, 2021

A safety message from CenterPoint Energy

If you smell natural gas, leave immediately. Call our Gas Leak Hotline at 800-296-9815. Do not use or store flammable products such as gasoline in the same room or area near the water heater or any other gas appliance.

Si percibes un olor a gas natural, sal inmediatamente. Llama a nuestra línea telefónica para fugas de gas a uno de los números de teléfono que aparecen arriba. No use ni almacene productos inflamables tales como gasolina en la misma habitación o en áreas cercanas a un calentador de agua u otro tipo de aparato a gas.

How to read your meter



The following is an example of how to read a typical meter index.

Look at the four dials with their curved arrows. Read from right to left as follows:

1. Read the "thousand-foot" dial as 7, the last number that the pointer passed. Note that the curved arrow on the dial shows a clockwise movement of the pointer.
2. Read the next dial, the "100-thousand" dial. The curved arrow on the dial above shows a

counterclockwise direction. The pointer is near the 9, but to be sure whether to read it as that number or the lower number 8, the previously mentioned "same or lower number rule" must be applied. Since the pointer in the "thousand-foot" dial to the right is nearer the 8 and the pointer has not reached the 0, the "100-thousand" dial should be read as 8.

3. Read the "100-thousand" dial, it seems to point to 2. Double-check by using the rule above. Since the pointer of the "100-thousand" dial is between 8 and 9, take the lower reading number, 1, for the "100-thousand" dial.

4. Read the left-most dial, the "million-foot" dial. The pointer is near the 6. Using the "same or lower number rule", we find the pointer on the dial to the right is between 1 and 2, so we read the "million-foot" dial exactly as the number it is on or near, 6.

The entire meter reading is 6187.